

Northeast Community College Connections

Fall 2013



Celebrate With Us!

**Northeast invites all to Open House
event on September 28th**

See inside cover for details.



Northeast
community college
FOUNDATION

40 Years and Still Going Strong



Forty years ago, the college that area residents know today as Northeast Community College began serving a 20-county region in northeast Nebraska. The community college was formed from the merger of Northeastern Nebraska College, formerly Norfolk Junior College, and Northeast Nebraska Technical College (NNTC) on July 1, 1973.

Northeast Community College, then known as Northeast Nebraska Technical Community College, inherited the new NNTC campus at 801 East Benjamin Avenue in Norfolk. The campus had opened in 1971 and consisted of the Maclay building, the Building Construction building and the Complex "B" building, now known as the Weller Building. A dormitory and the library were constructed a year later. Dr. Robert Cox served as the first president of the College that served approximately 800 credit students and offered a total of 39 programs of study in 1973.

In 1975, the name of the College was changed to Northeast Technical Community College (NTCC), and the campus continued to expand in its second decade. In 1980, credit enrollment reached 1,554 students and rose steadily through the 1980s. The

College also continued to address the needs of its growth with new construction and new housing.

In 1991, the name was officially changed to Northeast Community College; however, the College had been using the name since 1986 to show a more comprehensive curriculum. While several new buildings were constructed on its Norfolk campus, Northeast Community College also expanded into its 20-county service region by opening regional education centers in O'Neill and South Sioux City and a regional office in West Point.

In the new millennium, Northeast Community College saw several new construction projects on the Norfolk campus including a new residence hall, the Agriculture Complex, Utility Line/Truck Driving building, the College Welcome Center and the J. Paul and Eleanor McIntosh College of Nursing.

Northeast began offering extended campus classes in the Nielsen Community Center in West Point. In addition, the College partnered with Wayne State College to raise funds to construct the College Center in South Sioux City.

Today, Northeast serves approximately 7,300 credit students in over 80 programs and concentrations, as well as 15,000 students in non-credit classes designed for job upgrading, professional development, and

You're Invited!

Join the staff and faculty of
Northeast Community College
for an Open House.

Take a tour and see how the campus
has changed over forty years, meet
old friends, and view all of the new
things Northeast has to offer.

**SEPTEMBER 28th
12:00 - 4:00 pm**

(After the Lion's Club Parade)

**Free barbecue for the
first 250 people**
Guided Campus Tours • Music
Antique Cars and Tractors • Trolley Rides
Retiree Reception

In This Issue

| | |
|------------------------------------|----|
| Welders Fill the Gap | 2 |
| Success In Our Communities | 3 |
| A Lesson In Culture | 4 |
| College Updates | 6 |
| We're Back! Golf & Volleyball..... | 8 |
| A Mission for Nursing..... | 10 |
| Northeast List of Donors | 10 |

ABOUT THIS PUBLICATION

The Connections Magazine is published twice a year for Northeast Community College alumni and friends of the College.

Northeast Community College
801 East Benjamin Avenue
P.O. Box 469
Norfolk, NE 68702-0469

Phone: (402) 371-2020 or
(800) 348-9033
Fax: (402) 844-7400
Website: northeast.edu
Email: foundation@northeast.edu





Norfolk Junior College
1928-1932
1942-1968



Northeastern
Nebraska College
1969-1973



Northeast Nebraska
Technical College
1969-1973



Northeast Nebraska
Technical Community College
1973-1975



Northeast Technical
Community College
1975-1991



1991 - 2005



2005 - Present

special interests. The main campus in Norfolk consists of 205 acres with 23 buildings and a 566 acre farm for agricultural programs. Students living a distance from the main campus can enroll in classes and receive services at the extended campus locations in O'Neill, South Sioux City, and West Point.

With enrollment growth comes the need for additional facilities. This year, Northeast broke ground on its latest building. The 66,613-square-foot Applied Technology Education and Training Building will house Heating, Ventilation and Air Conditioning (HVAC); Building Construction; Electromechanical; Electrical Construction and Control; and a portion of Wind Energy Technology. Northeast is also expanding its reach to the western portion of its service area with a new \$2.5 million

extended campus facility in O'Neill. A capital campaign is currently underway to secure funding for the endeavor.

Dr. Michael Chipps began serving as the president of the College in 2012. "Northeast Community College has a long, rich history in serving and meeting the needs of the 20 counties of northeast and north central Nebraska," he said. "Our slogan 'We're Northeast. Success Starts Here.' clearly demonstrates Northeast's commitment to educational achievement of its students and to the region today and for the next 40 years and beyond." ■



Automotive
Technology



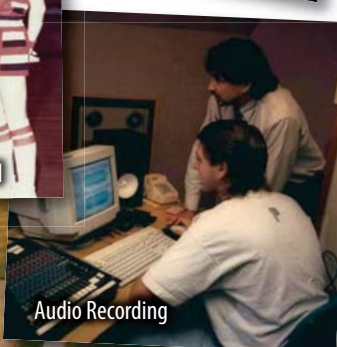
Nursing



Jazz Band



National Little College Athletic Association Champions, 1976 - Hawk's Men's Basketball



Audio Recording

Above: Names and logos of Northeast throughout the years.

Left: Northeast Nebraska Technical Community College in 1972 (also seen on the front cover).

Below: Northeast Community College in 2011.





Welders Fill the Gap

A combination of an improving economy, an emphasis on manufacturing welding and the realignment of the curriculum has created a perfect storm for an expansion in the welding program at Northeast Community College.

"We have typically had a waiting list of about 18 students wanting to get into our program each year. Last year, the numbers on the wait list were over 30," said Northeast Welding Instructor John Knapp.

Jay Connelly, associate dean of Applied Technology at Northeast, said this is in response to the tremendous need for welders. "We had been taking 18 students a year in this program, but based on what our advisory committees, businesses and manufacturers have consistently told us, we started to look at ways to help meet those needs more efficiently."

Connelly joined with Knapp to redesign the existing space in the Weller building. "We designed it together in terms of the best educational environment. It was driven by doing as much of this in-house as we can because we're very cognizant of cost," Connelly said.

Northeast Electrical Construction and Control students installed all of the overhead power, power panels, and cable trays as part of a class project. Building Construction students removed a wall. Knapp has done some of the fabrication of the booths while Connelly joined with Electrical Construction and Control faculty to design the electrical system.

In addition to increasing enrollment, the program curriculum is changing to meet the demands of employers. Connelly said this is definitely a more modern welding program. "We engaged support and discussions with the advisory committees, the manufacturers and employers of our graduates to find out what best practices and processes they need," he said. "We changed the entire process of welding from a repair, general purpose type blacksmithing approach into a production welding training facility."

Knapp agrees. "I try to instill in the students that welding is changing. Now, there are clean atmospheres to weld in. There are some welders in the aircraft industry who wear white lab coats and gloves because contamination is a big issue when they are welding on pieces of aluminum or titanium," he said. "Changing that image is important to me." ■

Local Host Families Needed for Students Away from Home

Some students who attend Northeast Community College come from homes that are hundreds and sometimes thousands of miles away. It is easy to see that many of them can feel lonely or homesick without having a close support system nearby. But the College is working to connect those students with community members who have an interest in helping students succeed in college and share some time together outside of the classroom.

"Our Community Connections: Linking Students to Families program is designed to help our students adjust when they are away from home," said Jonathan Langlois, student development coordinator at Northeast. "This is not a program where students come live with a family, but it instead gives students an opportunity to participate in family activities with their assigned host families."

Langlois said they ask students and their host families to make a commitment to get together at least once a semester. He said that could include activities such as attending a Hawks basketball or volleyball game, a movie night, Sunday dinner, or an outing to a local activity. "There will be invitations to get together with other host families and students at programs during the year. It allows students to share different cultures they have experienced living in other parts of the country and world," Langlois said. "The success of this program depends entirely on what the students and families put into it."

Both students and host families complete questionnaires and then are matched based on their common interests. Anyone who is interested in being a host family for this program should send an email to communityconnections@northeast.edu or call Langlois at (402) 844-7152. ■

Northeast Prepares for Reaccreditation Visit

Northeast Community College is in the final stages of preparing for a reaccreditation visit from the Higher Learning Commission of the North Central Association of Colleges and Schools on Oct. 21-23.

As a part of the reaccreditation process, staff members have completed a self-study that includes a thorough evaluation of Northeast's processes and a review of data to ensure that the College is fulfilling its mission and purposes toward our stakeholders—our students, our partners, our community members, and our Governing Board.



ABOVE: Northeast Community College President Dr. Michael Chipps meets with Applied Technology Associate Dean Jay Connelly and Welding Instructor John Knapp to look over renovation plans in the College's Weller building. Due to an increasing interest in its Welding program, Northeast Community College is nearly doubling the number of booths in its welding lab from 18 to 32.

Success In Our Communities



A capital campaign is underway to fund a new extended campus facility in O'Neill, which serves the north central region of Nebraska. Current college operations for the area are held in a 1938 former elementary school building.

"Although the school building has served us well for several years, the residents of the area have asked for a more modern facility," said Dr. Michael Chipps, Northeast president. "We have listened to their concerns, conducted research to see if it would be feasible to build a new facility, and asked them to help fund the construction, which they have agreed to do."

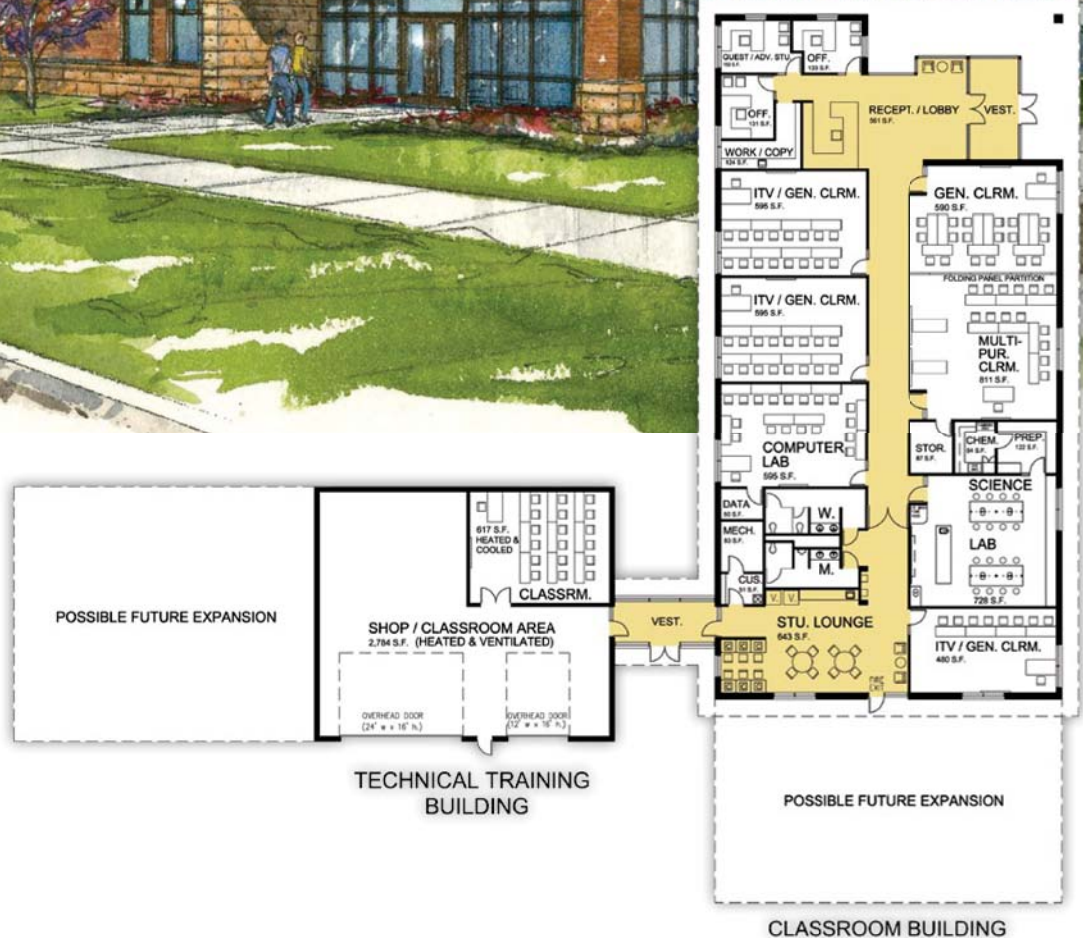
"The new extended campus will bring about untold economic development opportunities for the entire region," said Chipps. "It will give all ages of students an opportunity to go to college closer to home while retaining a job and supporting a family. It will also provide expanded training opportunities for business and industry so they can be more efficient and better compete in the global marketplace," he continued.

The new facility will be located on Highway 275/20 on the east side of O'Neill, situated between Farm Credit Services of America and Central Valley Agriculture. It will feature a state-of-the-art classroom building with a computer lab, science lab, and classrooms equipped with distance learning technology. It will also be connected to a technical training building with a classroom and shop area with large overhead doors to bring in agricultural and industrial equipment.

The two facilities, consisting of approximately 10,000 square feet, are estimated to cost \$2.5 million. Dr. Chipps noted that the College is committed to furnishing the new facility and providing staffing, maintenance, and new technology on an ongoing basis.

The capital campaign to finance the new extended campus is expected to be completed by the end of the year. Once funds have been secured, construction will take approximately 12-18 months.

Those interested in learning more about the extended campus capital campaign are invited to contact Dr. Tracy Kruse, associate vice president of development and external affairs, at 402-844-7056 or tracyk@northeast.edu. ■



A Lesson in Culture

Adam Peterson, speech and theatre instructor at Northeast, was one of 13 American educators to take part in a study abroad trip to Turkey last spring. The purpose of the trip was to forge connections with schools there.

"Turkey is so alone in the Middle East. They don't have any real allies. They're just an island there," Peterson said. "We were just trying to forge connections with schools there. It was almost like a goodwill mission."

This was the third annual study tour to Turkey sponsored by the Ohio State University Middle East Studies Center and the Niagara Foundation. The Americans were led by Niagara Foundation Executive Director Serkan Akan, who is Turkish.

Peterson said they learned a lot about Turkey's history. The group's tour started in the city of Istanbul where they spent several days. They then went on to the Turkish capitol of Ankara where they met with two charity organizations, as well as government officials. Their last stop was in Konya, in southern Turkey, where they spent two days.

Peterson found the people of Turkey are really not that much different from those back in the U.S. "Of course, Turkish government officials were making their country look as good as possible. But the people are like we are here. They are just trying to live their lives."

He shared that with his students when he got back. "I like to tell my students that culture is just society's reaction to the cards they have been dealt. And that's how culture is formed," he said. "Something might look very odd to our



eyes, but once you see how they live their lives, it makes sense. You see the purpose behind whatever tradition it is, whatever the case might be."

Peterson said that was evident during the daily call to prayer. Turkish Muslims perform the prayer ritual (Namaz) five times daily, according to the tenets of Islam. The first is before sunrise. The second is at lunchtime. The next is mid-afternoon while two more follow before and after sunset. He said one of the differences between Christianity and Islam is in places of worship. "I found that mosques are not places for ceremonies, they are only for prayer. Where we would expect to have a wedding in a church here, weddings there are in a family's home."

Peterson said he enjoyed spending time and having supper in the homes of different families. "The Turks are very big on hospitality. They laid out banquets for us; just huge feasts." He said it is quite common across the country. "It seems that in every house

you go in, the first thing they do is give you a glass of tea and biscuits." The same holds true in shops. "Even when you go into a shop and you have been in there for a while, they're going to offer you some teas. Their hospitality

is so great there," Peterson said.

Despite some areas of Turkey that have experienced violence at the hands of terrorists, Peterson said he never felt endangered when traveling in the



country. "There is a little tension in the country with a Kurdish group known as PKK. But we really we didn't see much presence of it (terrorism). I felt completely safe the entire time we were there."

Peterson said security was very tight in areas they traveled which actually made them feel safer. "We were with locals the whole time. We weren't lost tourists wondering the streets. As we learned more and more about the people, we just started feeling more comfortable," he said.

Peterson has taught an Intercultural Communications class related to Northeast's Global Studies Travel Abroad program. "I would like to get that to be an elective class here at the college. This would give students the opportunities to learn about different areas of the world," he said. Peterson has experienced other cultures first hand. In addition to the trip to Turkey, he has studied in Southeast Asia and Russia and lived in England. He

still would like to go to South America and Africa to immerse himself in cultures there as well.

"I would like to give my students all that I can of a global perspective in every class I teach, not just in Intercultural Communications," he said. "In fact, if you look at the objectives of the College's Global Educational Opportunities priority, we were able to match up with every objective that priority puts forward."

Peterson said he can see a lot of ourselves in the Turks. "If you are able to learn about a culture and look at an area of the world from that perspective, it teaches you about your own culture. I think that's probably the best and most powerful thing about experiencing any culture." ■

For more information on Northeast Community College's priority of Global Educational Opportunities, see page 6.



ABOVE: Hagia Sophia in Istanbul, Turkey is considered an important monument for both the Byzantine and Ottoman Empires. Once a church and later a mosque, it is now a museum of the Turkish Republic. Northeast Community College Speech/Theatre Instructor Adam Peterson was one of 13 American educators to visit the Middle Eastern country as part of a study abroad trip sponsored by the Ohio State University Middle East Studies Center and the Niagara Foundation.

LEFT: Instructor Adam Peterson photographed in Istanbul with a view from the Topkapi Palace Courtyard



Robinson Appointed to College Board of Governors

Julie Robinson, Norfolk, was recently sworn in as a new member of the Northeast Community College Board of Governors. She succeeds Peg Niewohner, Norfolk, who resigned her District 5 seat earlier this year. The district covers all of Madison County.

Robinson said she applied for the board position because she believes in the power of education. "If we offer people the opportunity to learn, we are all better because of it. I think Northeast Community College is a cornerstone of our community and I believe those cornerstones need to be supported," Robinson said. "I'm interested in being a member of the Board of Governors because I'm committed to a strong Norfolk and northeast Nebraska. I love the opportunity to be part of a process to effect change and grow."

Northeast Community College President, Dr. Michael Chipps, said he looks forward to Robinson serving on the board. "We are thrilled that Mrs. Robinson applied to serve as a District 5 representative. We have many initiatives currently underway at the College. I know she will provide wonderful input in helping Northeast continue to move forward to meet the needs of our constituents in our 20 county service area."

Robinson said she plans to run for the seat when it comes up for election in 2014. ■

REACCREDITATION continued from pg 2

"The self-study process is an opportunity for us to tell our story in a report in which we formally evaluate our student learning outcomes, the services we provide, our operations, and how we use data and other measures of effectiveness to improve the College," stated Dr. Michael Chipps, Northeast president.

Northeast Community College was first granted candidate for accreditation status in 1975. In 1979, following an in-depth self-evaluation and on-site visitation, Northeast received a five-year accreditation. The process of self-study has been initiated three times since 1979 with on-site visitations conducted by peer consultants/evaluators in 1983, 1993, and 2003. As a result, Northeast has been granted continuous accreditation.

To view the self-study and other supporting documents, visit www.northeast.edu/About-Us/Accreditation. ■

Northeast Continues to Expand Global Education and Experiences

Expanding global education and experiences for Northeast Community College students and faculty is one of eight institutional priorities at the College. It calls for developing opportunities for students and faculty to engage in learning activities designed to enhance cultural awareness and increase workforce competitiveness.

Dr. Michael Chipps, Northeast president, said, "America's community college students need to be exposed to the rest of the world. As people are educated, they realize that with greater educational opportunities comes more economic prosperity. Likewise, when they better understand the world around them, they are more appreciative of education."

In response to this priority, Northeast Community College officials have signed three Memorandum of Understanding (MOU) agreements with international higher education partners in the past eight months.

An agreement with North Lindsey College in Scunthorpe, England, created a program of international study between the two institutions. Northeast hosted six business students, an instructor and an administrator from North Lindsey in April as part of an exchange program. The same number of Northeast students, faculty and staff will attend classes in Scunthorpe this fall.

Another agreement with Middlesex University in London creates an opportunity for Northeast students to transfer to the university with an associate of arts degree in business administration once they graduate from Northeast. Northeast Vice President of Educational Services John Blaylock said, "We intend to expand the agreement to include areas in fine arts such as theater, literature, and graphic design. This agreement also allows our students to be eligible for tuition assistance when transferring to Middlesex University."

Northeast Community College students who will be entering their sophomore year will also have

the opportunity to attend Middlesex during the summer, to experience the English educational system first-hand.

The third agreement was with Aarhus Business College in Denmark. Three representatives from Aarhus visited the Northeast campus last December and spent considerable time in the Broadcasting department. The representatives expressed interest in working with Northeast on student produced news programs, which are becoming more common at colleges in Europe.

Chipps said agreements and partnerships with institutions such as these allow Northeast Community College students to be prepared to compete and work in a global economy. "Partnerships around the globe establish the foundation for a better understanding of our international neighbors as well as a mutually shared global perspective." ■

Northeast Expanding Mobile Technologies in the Classroom

Northeast Community College officials are pleased with an initiative that utilized mobile technologies in the classroom during the spring term. In fact it was so successful, the Apple iPad Initiative will expand into more classrooms this year.

Mobile technologies in the classroom allow students and instructors to have access to interactive textbooks with video, built-in quizzes, and Internet resources. They can share those resources easily by taking control of interactive

displays for presentations, or use specialized apps for focused lessons, among others.

Last spring, approximately 320 Northeast Community College students on the Norfolk campus used the tablets in their studies. A majority of the students surveyed said they felt having iPads in the classroom were helpful in their studies in many ways such as accessing course resources, learning new material and sharing information with classmates and the instructor.

"The project was also designed to incorporate challenge-based instructional methods to improve learning inside and outside of the classroom. Our goal with this priority is to foster a culture of innovation to improve student learning and to become a global leader in transforming teaching and learning," John Blaylock, vice president of Educational Services, said.

Several Northeast faculty members who took part in the initiative said they experienced students more engaged with each other and themselves during class sessions. Others indicated students became facilitators of instruction in some instances, creating a transformation from the traditional teacher-centered classroom.

Northeast Community College President Dr. Michael Chipps said he was pleased they could provide the tablets to the students. He said the College delivered more than just the device, however. "Not only did this initiative offer our students an opportunity to develop new skills, it gave our faculty new methods of teaching through the use of technology," he said. "I am certain those learning outcomes will stay with our students as they succeed at the College and are then able to apply these advanced skills in the 21st century workplace." ■

Northeast's Dekker Honored by the Nebraska Emergency Medical Services Association



Doug Dekker, director of Northeast Community College's Emergency Medical Services and Paramedic Program, has been honored by the Nebraska Emergency Medical Services Association (NEMSA) with the association's Presidential Award.

NEMSA President

Deb Von Seggern said the award is presented to individuals who go above and beyond what is asked

DEKKER continued on pg 9

Former Northeast President Honored

A new patio area on campus will now be known as "Paradise Courtyard" after former College President, Dr. Michael Paradise. The covered, seated area is adjacent to the College Welcome Center on the Norfolk campus.

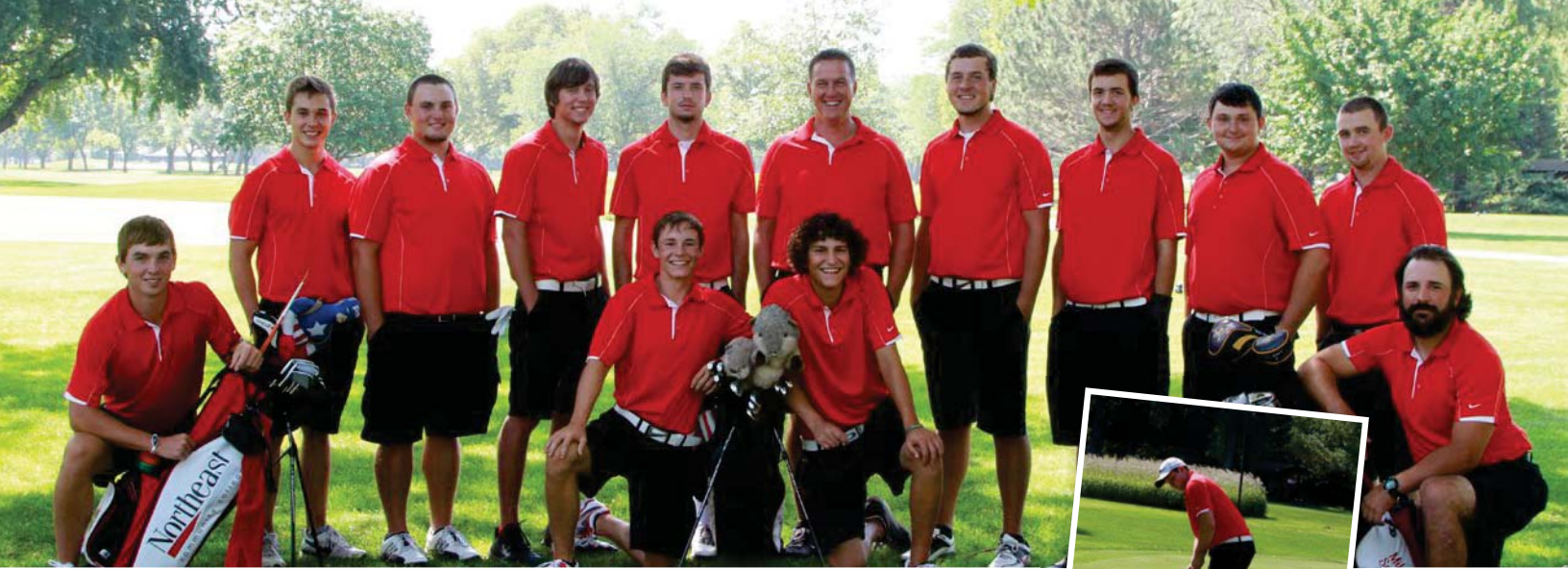
"A task force recommended that Dr. Paradise receive formal recognition for his contributions to the community college system," said Dr. Michael Chipps, Northeast President. Paradise was president of the Norfolk Junior College when it separated from the Norfolk Public School District in 1968. The College's name was changed a year later to Northeastern Nebraska College (NNC) to emphasize its service to a larger area. NNC later merged with Northeast Nebraska Technical College (NNTC) to form Northeast Nebraska Technical Community College, now known as Northeast Community College.

The task force's recommendation said Dr. Paradise fully supported the community college movement that merged Nebraska's junior and technical colleges. His work as a liaison with the Nebraska Legislature led to a smooth transition of the merger of NNC and NNTC. The task force said Paradise was instrumental in the formation of the community college system that is now in place in Nebraska.

Paradise, a native of the Greek island of Crete, came to the United States in 1951. In addition to his time at Northeastern Nebraska College, he also served as president of the former Central Technical Community College in Hastings. He has held other positions at the University of Alaska- Juneau, the University of Minnesota, Chadron State College and Northern State University in Aberdeen, SD. Paradise also served as executive director of the International/Intercultural Consortium, an association of over 120 colleges and universities, and director of the International Services Division of the Accrediting Commission for Community and Junior Colleges (ACCJC).

Paradise Courtyard is a part of a recently completed facilities project on the Norfolk campus. Chipps said the purpose of the project is multi-faceted. "In addition to providing outdoor seating and shade, this project addresses our aging and problematic utility infrastructure, technology systems infrastructure, and sidewalk improvements that are especially needed for our disabled students, employees and guests," he said. "The project also includes significant upgrades in lighting along the sidewalks, which creates a much safer environment." ■





We're Back!

Volleyball and Golf make a dramatic return to Northeast.

Students from the area who wish to participate in intercollegiate volleyball and golf can now do so again at Northeast Community College. College officials announced last year that these sports would be re-instated after several years of being inactive due to budgetary restraints.

According to Northeast Community College President Dr. Michael Chipps, the primary reason for the reinstatement is to provide additional opportunities for students to be engaged outside of the classroom. "Research shows that students who make connections at college not only enhance their academic experiences, but are more likely to be retained and to graduate. In addition, growing enrollments at Northeast is essential to our future success and this is a wonderful way to benefit all concerned; the students, the service area, and the College all at the same time," Chipps said.

Amanda Schultze was named as the volleyball coach. The former Amanda Nelson, is a 2006 graduate of Wakefield High School. She attended Central Community College in Columbus for two years, where she received an Associate's degree. She earned All-American honors as a setter with the Raiders.

She then transferred to Morningside College in Sioux City, Iowa, where she played libero for the Mustangs. Schultze earned her Bachelor's degree in business administration from Morningside College and obtained her Master's degree in Organizational Management with an emphasis in sport management from Wayne State College. She has been a graduate assistant volleyball coach at Wayne State the past two seasons.

Brad Bosh is coaching the golf team. Bosh grew up in Schuyler, Neb., and graduated from Central Community College in Columbus. While attending Central he was an assistant golf professional at Quail Run Golf Course. After graduation he moved to Manhattan, Kan., where he was hired as an assistant golf professional at Manhattan Country Club. He then moved to Salina, Kan., where he was the head golf professional/general manager at the Salina Elks Country Club.

In 2005, he began a career with Farm Bureau Financial Services. The coaching position at Northeast Community College has allowed Bosh to use his knowledge of the game of golf to help the team return to the top of the ranks. ■



DEKKER continued from page 6

of them by the agency and their support of the vision of NEMSA. "Doug is all of these qualities and more," Von Seggern said. "Northeast Community College is very lucky to have a person such as Doug a part of their team."

Dekker was instrumental in helping to set up the association's conference in Norfolk last spring. Approximately 400 people from across Nebraska attended the conference. "Doug is so positive and a joy to work with. If we encountered a problem, he had a solution or knew of someone who did," Von Seggern said. ■

Center for Enterprise Provides Training Opportunities Tailored to Employers' Needs

The Center for Enterprise (CFE) at Northeast Community College began operations last spring. The CFE's purpose is to expand the College's rural revitalization efforts by providing advanced education and training opportunities for employers, employees, entrepreneurs, and communities. The CFE opens doors to new opportunities for business and industry and entrepreneurs through one-stop premium services.

The ultimate goal for the CFE is to become the foremost education and training partner for northeast and north central Nebraska. The CFE will provide training opportunities that are tailored to meet the needs of the employer in technical skill development, as well as improving basic workplace skills in areas such as customer service and interpersonal skills. The CFE will also focus on promoting, leading and growing training to support economic development efforts in the communities served by the College.

Eric Johnson is the Associate Vice President of the Center for Enterprise. He earned his Bachelor of Arts degree in exercise science at Buena Vista University in Storm Lake, IA and his Master of Science degree in sports administration from St. Thomas University in Miami, FL. He had previously served as the Dean of Business, Math, and Technology at Northeast. For more information about the Center for Enterprise or training opportunities, contact Johnson at (402) 844-7236 or eric@northeast.edu. ■

Northeast Presents Partnership Award to Nucor Detailing Center

Northeast President Dr. Michael Chipps presented an award to Nucor Detailing Center (NDC) employees that Northeast and the NDC earned from

the American Association of Community Colleges (AACC). The award, one of five presented nationally, is for Outstanding College/Corporate Partnership. Northeast was recognized for its workforce development relationship with the Nucor Detailing Center.

The facility is a one of a kind operation providing drafting services to eight Nucor/Vulcraft Steel divisions across the United States. Pictured below (from left to right) are John Blaylock, Northeast vice president of educational services, J.J. Snodgrass, NDC business development director, Vulcraft NE, Mike Klug, NDC marketing coordinator, Vulcraft/Vercor Group, and Dr. Chipps. ■



Meet Dr. Tracy Kruse



Dr. Tracy Kruse began as the Associate Vice President of Development and External Affairs at Northeast Community College last spring.

She provides leadership and oversight in planning and implementing Northeast's resource development and alumni functions. She also serves as executive director of the Northeast Community College Foundation and works to grow and cultivate partnerships with governmental officials and leaders of the business and professional community across the 20-county area served by Northeast.

Dr. Kruse previously served as executive director of external relations at Northeast Iowa Community College in Calmar, IA. She received her Bachelor of Arts degree in public relations/communications, as well as her Master of Business Administration from the University of Northern Iowa, and her Ph.D. in educational leadership and policy studies at Iowa State University.

For more information about giving to Northeast, contact Dr. Kruse at (402) 844-7056 or tracyk@northeast.edu.

Northeast bids farewell to five long-time employees

Five long-time members of the Northeast Community College faculty and staff retired this summer.

Donna Niemeyer, Dean of Humanities, Arts and Social Sciences, began her employment with Northeast Community College in 1984 as a vocational evaluator. During her career, she also served as a full-time Psychology/Sociology instructor, Division Chair of the Liberal Arts Division, and Dean of Liberal Arts. She assumed her current position in 2003.

Robert Chamberlain, political science/geography instructor, began teaching political science and geography at Northeast Community College in 1994. In 1999, he was named Instructor of the Year by the Phi Theta Kappa honor society at the College.

Janelle Gerharter, director of public relations, began working at Northeast in 2000. She also served as the College's news writer and photographer.

Neil Harrison, English instructor, began as full-time English and creative writing instructor in 2001. Prior to being hired full-time, he served as an adjunct instructor at the College since 1987.

Lauren Millikan, registration specialist, assisted thousands of students registering for classes since 1999.



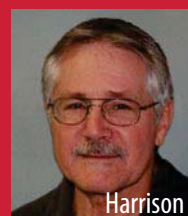
Niemeyer



Chamberlain



Gerharter



Harrison



Millikan

A Mission for Nursing

Missionary Benedictine Sisters Foundation promotes scholarship for nursing.

Single mothers will benefit from a scholarship established by the Missionary Benedictine Sisters Foundation. The annual scholarship will assist women from Nebraska or bordering states who are challenged financially to obtain a degree in nursing. The Sisters have been providing scholarships for approximately two years, both in northeast Nebraska and for their own Sisters in poor countries where they serve.

"We know how important education is for these young women so that they can improve their lives and the lives of their children," said Sister Pia Portmann, prioress of the Missionary Benedictine Sisters. "It is also important that healthcare in our area remains strong. Providing quality education for nurses is part of that goal. The Sisters are very happy to help them with these scholarships." ■

RIGHT: Sister Pia Portmann, (second from left) prioress of the Missionary Benedictine Sisters, presents a \$2,700 check from the Missionary Benedictine Sisters Foundation to Dr. Tracy Kruse, associate vice president of development and external affairs at Northeast Community College. The Sisters created an annual scholarship to assist single mothers who are challenged financially to obtain a degree in nursing. Also pictured are Sister Rita Marie Tofflemire and Sister Kevin Hermesen.



Northeast Foundation Donors

Scholarships are Essential for Student Success

Scholarship dollars are essential for Northeast Community College students' success. If you would like to help a Northeast Community College student in his or her pursuit of a college education, there are many ways to do so. Gifts can be made to an existing scholarship, to the Foundation's General Scholarship Fund, or to establish your own named annual or endowed scholarship.

An annual scholarship may be awarded for just one year, if that is your desire, or for as many years as you wish. A minimum of \$500 is recommended for an annual scholarship.

An endowed scholarship will provide awards to deserving students for generations to come. A minimum of \$25,000 is required to establish a new endowed scholarship.

For more information on establishing an annual or endowed scholarship, contact the Foundation Office at (402) 844-7056.

Newly Established Foundation Scholarships

Dr. James Boullion Memorial
Donald Liedman and Dorrine DeHaven Liedman Scholarship
Livestock Judging Team Scholarship
Missionary Benedictine Sisters Scholarship
Jesse Retzlaff Memorial Scholarship
Floma Taylor Scholarship
Marc Whisinnand Memorial Scholarship



The Northeast Community College Foundation's Key Society consists of individuals or families who have arranged for a planned gift to the College through a specific provision by will, the creation of a charitable trust or gift annuity, the gift of a life insurance policy, or the gift of real estate. By planning their gift, the Key Society's members are able to make a generous donation without using any of their current income.

In many cases, these legacy gifts keep giving past the donor's lifetime, enabling the donor to touch the lives of many future generations of Northeast Community College students. For more information about becoming a member of the Key Society, contact the Foundation Office at (402) 844-7056.

Annual Gifts

The following individuals, businesses, and organizations donated to the Northeast Community College Foundation this past year. Gifts given directly to the College may not be mentioned here but are equally appreciated.

Dick & Barbara Adams
Richard Aerni
Affiliated Foods Midwest Cooperative Inc.
Agricultural Services, Inc.
Anthony & Gloria Akainda
Dr. James & Dr. Renee Albin
Alcoa Foundation
Terry & Stacey Aldag
Chris & Mary Alt
American Association for Women in
Community Colleges
Dale & Phyllis Ames
Bill & Charlene Anderson
Dan & Kris Anderson
Andrew & Janet Anderson
Steve & Peggy Anderson
Scott & Donna Andrew
Mike & Sharlene Anson
Dorothy M. Arent
Arthur J. Gallagher & Co.
Mike Auten
John & Amanda Avidano
Jerome C. & Nina M. Bahm
Jim & Ann Bahm
Paul & Helen Bailey
Trevor Bailey
Maureen & Tracey Baker
Mary Ball
BankFirst of O'Neill
Bill Barnes
Colleen Barnes
Sara Barritt
James Bartee & Bonnie Johnson-Bartee
Gary Bathurst
James Batt
Sarah Bauermeister
BCDM Architects Inc.
Anthony Beardslee
David Beaudette
Henry & Mary Beel
Lon & Lin Behmer
Craig & Kristy Belina
Geraldine Benton
LaNeta Berger
Bernetta Berlin
Kenneth & Nancy Berney
Rollie & Nancy Bettendorf
R.J. & Lynne Bichlmeier
Neal & Rene Bierbaum
Steve & Peggy Bierhaus
Derek & Danessa Bierman
Big Red Printing/Gene & Becky Walter/
Mark & Jayne Malmberg
Biglin's Mortuary - Bob Berg & Ron Grenz
Bill Nielsen Landscaping Inc.

Paul Campbell & Cathie Bishop
Blackburn Manufacturing Company
Donald & Coleen Blair
Larry & Sharon Blaser
Jan Blatchford
John & Diana Blaylock
Steve & Jacqueline Blocher
Ryan Bloomquist
Bode's Equipment & Parts Inc.
Dr. Linda Boullion
Loretta Brabec
Karen Bradley
James & Michaela Brauer
Tina Bredehoeft
Anita Brenneman
Kip & Coleen Bressler
Gary & Jean Brodecky
Tom & Betsy Broekemeier
Kelven & Nancy Brozek
Stephanie Brundieck
Gary & Caroleen Bruns
Elizabeth Budler
Burger King - Norfolk
Mary Burke

Dale & Kris Coan
Yvonne Collison
Complete Floors Inc.
Jay Connelly
Control Management Inc.
Dr. Michael & Connie Cooper
Ronald J. & Victoria L. Cork
Dr. Robert P. Cox & Helen Ann Cox
Doug Cromwell
Cuming County
Jim & Julie Curry
Lynn Daberkow
DACO Construction Company Inc.
Gregg & Pamala Dahlheim
Dakota County
Dana F. Cole & Company-Lincoln
Alan & Fay Darnall
John W. & Diane D. Davies
Daycos
Blanca De La Torre
Doug Dekker
Joe & Mandy DeLancey
Thomas & Patricia DeLay
Doug & Ellen Denney

Annette Fante
Farm Credit Services of America
Farmers Ranchers Cooperative
Anthony Faust
Tim & Ann Fenton
Joe & Bev Ferguson
Debra K. Ferris
Marcia Field
Cecil & Lorine Fields
First National Bank & Trust Co.
Steve & Cindy Flaherty
Mike & Mandi Flood
Debra Flynn
Dawn Fosdick
Mary Louise Foster
Kenneth & Mary Frank
Troy & Kim Frank
Mike & Margie Frank
Guy & Teresa Frank
Steven & ViVi Freudenburg
Milan & JoAnne Frey
Virgil & Betty Jane Froehlich
Dan & Nancy Frohberg
Eleanor Fuhrman Estate
Kevin Furstenau
Kathleen Gaines
Jorge Jaramillo & Deb Gaines-Jaramillo
Bank of Newman Grove (The Gerhart
Family)
Dave & Janelle Gerharter
Dr. A. Dean Gilg
RADM James & Nancy Gleim
Paul & Darlyne Goodman
Gerald & Grace Gould
William & Elizabeth Grant
Great West Casualty Company
Green Line Equipment
Rodney & Jennifer Greve
Kelly & Kelly Griffith
Jim & Terri Gross
Shanelle Grudzinski
Karen Guy
Sonia Haberer
Amanda Hafer
Bob & Nadine Hagedorn
Roger Hahn
Renee Halsey
Hampton Inn - Norfolk
Corinna Hansen
Dr. Jay & Linda Hansen
Lois Hansen
Mark & Jennifer Happold
Neil Harrison
Sharon Hart
Keith E. Harvey & Diana C. Harpel-Harvey
James & Jackie Hatfield
Gerald & Judy Hayes
Heartland Physical Therapy
Terri Heggemeyer
David Heidt
Victoria Hepperlen
Lonny & Lori Hermelbracht
Micki Hesper Estate
Kory Hildebrand
Ron & Sandy Hilliges

"I am a single mother raising two very active children...I work full-time and am a member of the county fair board...Your financial generosity allows me to pursue my degree with a lot less financial stress. Thank you for your generous contribution and for believing in me."

Susan Sudbeck, Accounting

Tunie Burke
Thomas & Edwina Burns
Bill & Patricia Burris
Burt County
Lucas & Rachel Burtwistle
Shirley Buss-Jacobsen
Doyle & Jane Busskohl Family/Arrow Stage
Lines/Allied Tour & Travel
Butte State Bank
CalmWater Financial Group
Jim & Cindy Carlson
Roger & Karen Casselman
Rachel Casselman
C. Lloyd & Kay Castner
Ralph & Kimberly Castner
Anna Castner Wightman
Cedar County
Bob & Nancy Chamberlain
Anthony Chambers
Dr. Michael & Susan Chipps
Richard Chrisman
Kirk Christian
The City of Norfolk
The City of O'Neill
Heather Claussen
Robert & Joyce Clayton
Darrell & Beverly Cleveland

Dr. Ervin & LaVada Dennis
Matt & Tracy Dennis
Garret Desautels
Stacy Dieckman
Stanley & Lisa Dike
Dinkel Implement Co.
Dixon County
Jason & Jami Doeie
John & Eileen Doherty
The Dover Family
Deb Dreher
Sam & Christine Drevo
John & Katherine Dydyn
Ken & Anne Echtenkamp
Dian Edwards
Gary & Margy Ehrenfried
EJ Computers LLC
Elkhorn Valley Bank & Trust
Elms Motel
Robert & Verdella Emerson
Stefanie Emrich
Keith Erickson
Rich Erickson
Wayne & Joyce Erickson
Ericson State Bank
Tom & Mary Jo Falter
Jared & Julie Faltys

Dr. Terry & Cheryle Hinnerichs
 Ryan Hobza
 Kenneth & Karen Hoefler
 Cara Hoehne
 Anthony & Karen Hoffman
 Larry & Karen Hoier
 Don & Marjorie Holloway
 Jerry & Elaine Holmberg
 Doug & Doris Holmquist
 Holt County
 Holt County Visitors Committee
 Mary & Larry Honke
 Matt & Tiffany Hopper
 DeLaine Horn
 Dianne Horrocks-Ross
 Steve & Pam Huber
 Ann Hueftle
 Insight Financial Planning
 Interstates Foundation
 Megan Jansen
 Merle & Darlene Jansen
 Larry Jenkins & Jane Mapes
 Jerome & Imogene Jilek
 Dale & Jamie Johanson
 Elizabeth Johnson
 Eric & Michelle Johnson
 Mark & Greta Johnson
 Matt & Tanis Johnson
 Phyllis Johnsrud
 Denise Jones
 K. Porter Construction, Inc.
 Daniel & Amy Kaiser
 Jeffrey & Tere Karella
 Tim & Lynda Kassmeier
 Lyle & LeaAnn Kathol
 Mike & Debra Kelly
 Norfolk Kiwanis Club
 Jeanette Klitz
 John Knapp
 Mr. & Mrs. Phil Knerl
 Knox County
 Kelly & Jill Koch
 Kevin & Amy Koehler
 Maurice & Anita Koenig
 Tim & Shelli Koester
 Patrick & Joan Kollars
 Ralph Kopejtka
 Neva Korell
 Glen & Lynne Koski
 John I. Kruse
 Tracy Kruse
 Renee Krusemark
 Ron & Carol Krutsinger
 Arlan & Jean Kuehn
 Rick Kuehn & Stacy Strawn
 Tina Kumm
 Delbert & Marilyn Kunkee
 Glen & Shelley Lammers
 Calvin Lamprecht
 Land O'Lakes Foundation
 Terry Lange
 Helen Langel
 Jonathan Langlois
 John & Peggy Lanz
 Tom & Jan Larsen
 Constance Larson

Steven Larson
 Arlin & Nancy Leder
 Howard Leshovsky
 Mabel Letheby
 Donald Liedman & Dorrine DeHaven
 Liedman
 John & Amanda Liewer
 Harry & Andrea Lindner
 Gary & Carolyn Lingenfelter
 Michael & Kimberly Long
 Shannon Long
 Love Signs Inc.
 Lower Elkhorn Natural Resources District
 Jason Luhr
 David & Ann Lund
 Madison County
 John & Marjorie Malleck
 Nick & Makala Maple
 Hilary Maricle
 Keith & Barb Matthews
 Ruth Matthews-Mott
 Jerry & Jan McCallum
 James & Stacie McCarville
 Lori McClaren
 McDonald's Restaurant
 J. Paul & Eleanor McIntosh
 Jonathan & Barbara McIntosh
 Richard & Jean McIntosh
 Thomas & Mary McKeon
 Doug & Chris McKibbin
 Brandon McLean
 Jill McNally
 Tonya Mefford
 Howard & Wanda Meier
 Joletta Mejsirik
 Julie A. Melnick
 Larry & Tracey Merchen
 David & Heidi Merritt
 Connie Meyer
 Dr. William & Mary Meyer
 Michael Meyer
 Midwest Bank
 Midwest Toy Farmers
 Tony & Laurie Milenkovich
 John & Dorice Miller
 Mary Miller
 Earl & Pamela Miller
 Timothy & Janet Miller
 James Dwyer & Dr. Connie Miller
 James & Lauren Millikan
 Missionary Benedictine Sisters
 Earl & Marilyn Mitchell
 Paul & Sherry Moe
 Eunice Mohl
 Jim & Cynthia Mohl
 Shari Moore
 Dan & Val Morfeld
 Edward & Corinne Morris
 David & Cynthia Morrow
 Steve Morton & Joanne Roberts
 Don & Vickie Moser
 Dr. James & Cherie Murphy
 Ted Myers
 Nebraska Community Foundation
 Nebraska Public Power District
 Northeast Auto Tech Department

Northeast Diesel Department
 Northeast Electrical Construction & Control
 Department
 Northeast Housing Department
 Northeast Student Services Office
 Jane Neely
 Gregory & Deanna Nelson
 Marie Nelson
 Roger & Roxane Nelson
 Terry & Nancy Nelson
 Theresa Nelson
 Dr. Randall & Kay Neuharth
 Larry & Donna Niemeyer
 Michael & Amanda Nipp
 NMN Express Inc.
 Bob & Sharon Noelle
 Norfolk Garden Club
 Norfolk Iron & Metal Co.
 Norfolk Lions Club
 Norfolk Mutual Insurance Company
 Norfolk Public Schools
 North Central Anesthesia Services, LLC
 North Central Automation, Inc.
 Northeast Nebraska Master Gardeners
 Oakland Mercy Hospital
 Steve & Angela Obst
 Norman Ochsner
 Joe & Pam O'Connell
 Kathy O'Donnell
 Don & Jean Oelsigle
 Larry & Barbara Oetken
 Mike & Joan Olenich
 Olson Industries
 O'Neill Community Foundation Fund
 Gary & Jane Parker
 Dr. Bill & Deborah Path
 Jacob Paustian
 William & Susan Pearson
 Andrew & Di Ann Peitzmeier
 Eldon & Jane Peters
 Renee A. Peters
 Gerald Petersen
 Mark & Beth Pfeil
 Paula Pflueger
 Van & Doris Phillips
 Pierce County
 Sarah Pinkelman
 Cheryl Pinkley
 Donald Pinkley
 Pinnacle Bank
 Pioneer Hi-Bred Intl. Inc.
 Larry & Lois Poessnecker
 Chuck & Linda Pohlman
 Bryce & Shirley Pohlman
 Donita Pokorny
 John Post
 Judy Potter
 Mike & Brenda Potts
 Steve & Shirley Powers
 Ann Powley
 Jeff Powley
 Tony Praest
 Sharlene Pranschke
 Prenger's Restaurant
 Glen & Linda Prinz
 Providence Medical Center

Dave & Gwen Ptak
 Sonja Putnam
 Dan & Kim Radenz
 Judy Rasmussen
 Kristi Rastede
 James & Mary Ray
 Harley & Donna Rector
 Gene & Teri Reed
 Sharalyn Reed
 Bob & Julie Regan
 Lisa Reifenrath
 Gregg & Diane Reikofski
 David & Lynn Reynolds
 Joe & Nancy Reynolds
 Les & Josie Richmond
 Ben & Amy Ries
 Charlotte Riewer
 Peter Rizzo
 Jim & Deb Robertson
 Mike Roeber
 Wendell & Tammy Rohde
 Norma Rohlff
 Allen Rolf
 Eric & Angela Roskeland
 Jared & Brandi Rossman
 Greta Roth
 Chuck & Beth Rowse
 Pam Saalfeld
 Wayne & Janet Sager
 Steve & Colleen Sampson
 A. Phillip & Patricia M. Samuels
 Shawn & Miranda Sayers
 Brad & Carrie Schacht
 Gregory & Mary Schaecher
 Curtis & Jennifer Scheer
 Fred & Sandra Schellpeper Family
 Jeff & Lori Scherer
 Addie Scheve
 Phillip Schimonitz
 Greg & Judy Schindler
 Danny & Myndi Schlote
 Donald Schmaderer
 Jon & Jennifer Schmaderer
 Jeffrey & Amy Schmid
 Merri & Darold Schneider
 Scholarship Foundation
 James Scholten
 Mark & Debra Schroeder
 Kevin & Lisa Schrunck
 Pattie Shuckman
 Nancy J. Schultz
 Roger Schultz
 Vernon Schultz
 Tim & Erin Schultze
 Jerry & Bonnie Schulz
 Dean & Pam Schwartz
 Kathleen Schwartz
 Ryne Seaman
 Dr. & Mrs. Gregory Sears/Oral &
 Facial Plastic Surgery
 Brian, Nicole, Ally & Emma Sedlacek
 John & Vickie Sehi
 Vern & Mary Jo Seier
 David & Jean Sellars
 James Serres
 Duane & Dr. Karen Severson

Terri Shafer
 Angela Shaffer
 Shamrock Nursery
 Todd & Amy Shane
 Michael Sharp
 David Shipley
 Marjean Shively
 Pam Siebrandt
 Brad & Gigi Simonsen
 Steve & Connie Sixta
 John & Susan Skogstoe
 Katie Sladky
 Mary Slattery
 Marie Smalley
 Don Smejkal
 Dr. Bob & Jeanne Smith
 Dawn Smith
 Todd & Brenda Sock
 Jens & Carol Sorsen
 Steve & Connie Soukup
 Kenneth & Barb Soulliere
 Lindsay Spiegel
 Robert & Marie Spomer
 St. Francis Memorial Hospital
 Russell & Sally Stahlecker
 Stanton County
 Stanton State Bank
 Stanton Telecom Inc.
 Bill & Nancy Staub
 Bret Steinhauser
 Sterling Computers Corporation
 Zelda Stevens
 Ken & Ann Stinson
 Steve & Kathy Stover
 Larry & Debb Strate
 Carla Streff
 Kyle & Sarah Streich
 Waylon & Michela Strom
 Wayne & Harriet Studebaker
 Carol Sullivan
 Dennis & Charlotte Sullivan
 Sunrise Flower and Gift
 - Allan & Corinne Winings
 Dr. G. Tom & Susan Surber
 Darlene Svancara
 Roger & Lisa Svec
 Matt & Carol Svehla
 Wendy Swenson
 Floma Taylor Estate
 Kenneth & Jo Tedstrom
 J. Michael & Sharon Tesar
 Trisha Thelander
 Joanne Thietje
 Robb & Sharyn Thomas
 Kim & Kathleen Timperley
 Ken & Evelyn Torkelson
 Lee & Louise Torkelson
 The Tri-County Bank Stuart-Atkinson-
 Bassett
 Marlene Uhing & Bob Uhing
 Dick & Mary Kay Uhing
 Melvin & Dorothy Unkel
 US Bank N.A.
 US Bank Foundation
 U-Save Pharmacy
 Eric & Kimberly Vanosdall

Steve Vargason
 Randy & Susan Vesely
 Kyle & Tonya Voecks
 Everett Vogel
 Brad & Stacy Vogt
 Aaron & Michele Volkman
 Larry & Nell Votruba
 Roger Walker
 Aaron & Laura Walter
 Chad & Jennifer Warneke
 Steve & Karen Warner
 Frank & Carleen Warrack
 Jack & Jean Warrick
 John & Glenice Watson
 Brittnee Weeder
 Greg & Karen Weidner
 Timothy & Beth Welke
 Wells Fargo Educational Matching Gift
 Program
 Wells Fargo Foundation
 Janell Welstead
 Dale & Kelly Wernhoff
 Jeanne West
 West Holt Memorial Hospital, Atkinson
 Nancy Whisinnand
 Danny Whitlock
 Jolene Wieser
 Russ & Kim Wilcox
 Makala Williams
 Scott & Lori Williams-Insurance Associates,
 Inc.
 John & Cindy Winkleblack
 Rick & Wendy Winters
 John & Kathi Witherspoon
 Samantha Wolfe
 Candi Wolff
 Cal & LaRae Worden
 Norma Worley
 Misty Wortman
 Kenneth Wurdinger

Gifts in Honor or Memory

We are proud to recognize all contributions directly received by the Northeast Community College Foundation in memory of a loved one or in honor of a friend or family member. Cash gifts forwarded to the Foundation by friends and family members may not be recognized here but are equally appreciated.

Gifts were received in honor of . . .

Dick & Gwen Lindberg
 Mary E. Welch
 Robert Welch

Gifts were received in memory of . . .

Larry Apland
 Frieda Benish
 Dr. James Boullion
 Gene Bourelle
 Robert Chippis



Hank Stalp (left), formerly of West Point, and Northeast President Dr. Michael Chipps recently had a chance to visit in the J. Paul & Eleanor McIntosh College of Nursing. Hank and his late wife, Mona, made a generous contribution to help fund the construction of the facility. Mrs. Stalp was a nurse, and Hank donated some of her nursing memorabilia, pictured behind the gentlemen, to serve as a legacy to Mona and an inspiration to nursing students.

Margie Gerharter
 Cindy Gipson
 Delores Hahne
 Dorothy Hansen
 Aaron Hoffart
 Pearl Hopper
 Robert Lauters
 Catherine Leshovsky
 Sondra Olson
 Ben Powley
 Harley Rector
 Clarence Schmitt
 Tonda Shipley
 Lorraine Tramp
 Carl Weihe

Fresco Inc.
 Interstates Construction Services
 Lyle Kathol
 Lee's Refrigeration
 John Markhofer
 Northeast Nebraska Public Power District
 Jacob Paustian
 Power Delivery Service Inc.
 PPG Industries Inc.
 Seward County Public Power District
 Victor Technologies International Inc.

In-Kind Contributions

Northeast Community College recognizes those who contribute services or equipment. Because of these generous donations, the College is able to provide valuable learning opportunities to our students. Some in-kind donations given directly to departments may not be mentioned here but are equally appreciated.

3E Electrical Engineering & Equipment Co.
 American Bottling Company
 Broadwind Services LLC
 CHS Inc.
 Jay Connelly
 John W. Davies
 Elkhorn Rural Public Power District
 Farm Credit Services of America
 Flat Water Wind Farm

Your investment matters . . .

Last year, 205 scholarships totaling \$129,941 were awarded to students through the Northeast Community College Foundation. Donations to the Foundation also purchased \$74,462 worth of equipment and program support used to enhance student learning at Northeast.

Northeast
 community college
FOUNDATION

northeast.edu/Giving
(402) 844-7056

Northeast

community college

FOUNDATION

Main Campus
801 East Benjamin Avenue
PO Box 469
Norfolk, Nebraska 68702

northeast.edu
(800) 348-9033

Nonprofit
Organization
U.S. Postage
PAID
Norfolk, NE
68702
PERMIT NO.471

Contact us

If you would like to discuss the possibilities for contributing to the success of a student, please contact

Dr. Tracy Kruse at the
Northeast Foundation
(402) 844-7056

foundation@northeast.edu

PO Box 469 • 801 E. Benjamin Avenue
Norfolk, NE 68702-0469

