

A black trophy icon with laurel branches, set within a red shield-like shape at the top of a black banner.

**SCHOLASTIC  
CONTEST**

**2024**

**MARCH 27, 2024**

**Northeast**  
community college

# Scholastic Contest Previous Winners

## 2023

Class C - Hartington Cedar Catholic  
Class D - Bancroft-Rosalie Schools

## 2022

Class C - Pierce High School  
Class D - (Tie) Bloomfield High School &  
St. Mary's High School - O'Neill

## 2021

Class C - Pierce High School  
Class D - St. Mary's High School - O'Neill

## 2019

Class C - Wayne Community Schools  
Class D - Wausa Public School

## 2018

Class C - O'Neill Public Schools  
Class D - Bancroft-Rosalie Schools

## 2017

Class C - Wayne Community Schools  
Class D - St. Mary's High School - O'Neill

## 2016

Class C - Wisner-Pilger High School  
Class D - St. Mary's High School -  
O'Neill

## 2015

Class C - Pierce High School  
Class D - St. Mary's High School - O'Neill

## 2014

Class C - Wisner-Pilger High School  
Class D - Lindsay Holy Family School

## 2013

Class C - Wayne Community Schools  
Class D - St. Mary's High School - O'Neill

## 2012

Class C - Wisner-Pilger High School  
Class D - West Boyd Schools

## 2011

Class C - O'Neill Public Schools  
Class D - West Point Central Catholic

# Table of Contents

Entry .....	2
Eligibility .....	2
Event Cancellation.....	2
Competition Rules.....	3
Scholarships/Tuition Waivers.....	3
Check-In .....	3
Campus Info .....	4
Entertainment .....	4
On-Campus Dining .....	4
Presentation of Awards .....	4
Test Time Schedule.....	5
Test Descriptions .....	6-9
Campus Building Maps.....	10-14

## ENTRY

Scholastic Contest entries must be received by the Northeast Community College Educational Services Office on or before January 24, 2024. After the initial registration, the registered schools will be sent a link to sign up their individual students for each test. These entries will need to be submitted by February 29, 2024. All entries need to be submitted electronically using the link provided. In the case of emergencies, please contact Marissa Sudbeck at msudbeck2@northeast.edu. *No late registrations or student substitutions will be allowed after the February 29 deadline.*

## ELIGIBILITY

Contestants shall be a bona fide high school student, grades 9 through 12, doing at least passing work during the previous semester enrolled. Students should not be registered for a test when they are enrolled in or have taken the next higher level academic course. If students have previously taken a specific subject exam, they are ineligible to repeat the exam at a later date.

## EVENT CANCELLATION

If weather conditions are severe, it may result in cancellation of the Scholastic Contest event. Weather-related announcements will be broadcast via the Northeast Community College website (northeast.edu), the college automated phone system (1-800-348-9033), and all area radio and TV stations. The decision to cancel will be made by 5:00 a.m., or shortly thereafter, on the morning of the event. If Northeast Community College is closed, all student events are also canceled. High school officials should use their discretion to determine if weather and road conditions in their immediate area make travel hazardous for their students.

## COMPETITION RULES

1. Testing periods will be 60 minutes in length. Exams will be given only at the time scheduled. Only the Basic Construction and Welding exams will be given during two testing sessions due to limited capacity in facilities.
2. The number of contestants from any one school in any test will be limited to ONE. No individual student may be registered for more than one test during the same time period. Each individual student may be registered for no more than TWO separate tests.
3. Students will not be allowed to use cell phones or other external devices, other than permitted calculators specifically noted in test descriptions while testing. Violators will be disqualified from the exam.
4. Student testing accommodations must be requested in writing by a high school official 10 working days prior to the event. Requests should be sent to Marissa Sudbeck, msudbeck2@northeast.edu.
5. All tests/questions remain the property of Northeast Community College and are routinely reviewed and updated by College faculty. Tie breaker questions will be used when required to determine placing. All decisions are final.
6. Northeast Community College does not discriminate on the basis of sex, handicap, race, color, age, religion, marital status, veteran's status, or national or ethnic origin in educational programs, admissions policies, employment policies, financial aid, or other college-administered programs.
7. Inquiries concerning the Scholastic Contest or a specific exam should be addressed to Marissa Sudbeck, msudbeck2@northeast.edu.

## SCHOLARSHIPS/TUITION WAIVERS

The Northeast Community College Foundation has authorized two \$1,000.00 scholarships for the 2024-2025 academic year to be awarded as part of the Scholastic Contest competition. The \$1,000.00 scholarship will be awarded to the school whose team places first in each class of competition: Class C and Class D.

The scholarship recipient must be a student who:

1. Participated in the 2024 Northeast Community College High School Scholastic Contest.
2. Will graduate from high school in 2024.
3. Registers as a full-time student at Northeast for the 2024-2025 academic year.

In addition to the \$1,000.00 scholarship granted to the winning schools in Class C and Class D, Northeast will be awarding tuition waivers valued at \$1,000.00 each (one-half awarded in the fall and spring terms) to seniors who earn first, second or third place in their exam. The tuition waivers will be awarded to the 12 seniors in each class with the highest percentage grade on the tests, starting with those who placed first in their exam. The College will determine any tie-breaker situations.

School officials are asked to contact the Financial Aid Office at Northeast Community College and provide them with the scholarship/tuition waiver recipient's name, when determined.

## CHECK-IN

Check-in for the Scholastic Contest will be held in the lobby of the Cox Activities Center between 7:45-8:15 a.m. School faculty or sponsors must pick up their registration packets during this time.



## **HOSPITALITY AREA**

School counselors and sponsors are invited to gather for coffee and conversation in Union 73 (second floor lounge) beginning at 8:30 a.m. Northeast staff will be available to answer questions on college programs and processes.

## **CAMPUS INFORMATION**

Information and brochures on college programs of study will be available, along with guidelines to help coordinate future campus visits.

## **ENTERTAINMENT**

Entertainment and activities for students such as a scavenger hunt, karaoke, gaming or a movie, are being planned throughout the day in the Cox Activities Center.

## **ON-CAMPUS DINING**

### CONCESSIONS

A concession stand in the lobby of the Cox Activities Center will offer donuts, pizza, nachos, pop, candy and other snack items. Hours are 7:30 a.m.-1:30 p.m.

### HAWKS POINT DINING HALL

Cafeteria style breakfast is available from 6:30am-10:00am and lunch from 11:00am-2:00pm. Schools can pre-purchase student meal tickets at \$8 each by contacting April Barg at [April.barg@compass-usa.com](mailto:April.barg@compass-usa.com) or calling 402-844-7165. Price will be different at the door.

### UNION COFFEE SHOP - WE PROUDLY SERVE STARBUCKS

A coffee kiosk located in Union 73 (second floor) offers a menu of Starbucks brewed coffee, espresso beverages, and Frappuccinos. Bakery and snack items are available. Hours are 8:00am-5:00pm.

### LEGENDS GRILLE

Serves Breakfast and lunch. Located in Lower Level of Union 73. Hours are 7:00am-4:00pm.

### MONDOS

Sandwich Shop. Located in Lower Level of Union 73. Hours are 10:30am-2:00pm.

## **PRESENTATION OF AWARDS**

Awards will be presented beginning at 1:45 p.m in the Cox Activities Center gymnasium. Individual student names will be recognized for first, second, and third place in each test, in each class of the Scholastic Contest competition and medals will be awarded. (If only one school enters a class, only one medal will be awarded.) High School Team plaques will also be awarded to the top three high schools receiving the most points in Class C and in Class D. Scoring is based on the following system:

First Place, 3 points | Second Place, 2 points | Third Place, 1 point

In addition, certificates of participation will be given to all registered contestants. Following the Scholastic Contest, certificates, medals, plaques, and a summary report of the respective school's students will be forwarded to the school official identified in previous correspondence.



# Test Time Schedule

**8:30 a.m. - 9:30 a.m.**  
**Test Session 1**

**Subject**

Agri-Science  
 Algebra II  
 Basic Construction\*  
 Chemistry  
 Medical Terminology  
 Parenting & Child  
 Development  
 Public Speaking  
 Trigonometry  
 Vocabulary  
 Welding\*\*

**9:45 a.m. - 10:45 a.m.**  
**Test Session 2**

**Subject**

Accounting I  
 Algebra I  
 American Government  
 Basic Construction\*  
 Foods & Nutrition  
 Geometry  
 Introduction to Psychology  
 Literature  
 Technical Mathematics  
 Welding\*\*  
 World History

**11:00 a.m. - 12:00 p.m.**  
**Test Session 3**

**Subject**

American History  
 Biology  
 Computer Literacy  
 Drafting  
 English Composition  
 Geography  
 Personal Finance  
 Physics  
 Workplace Communication

\* limit of 20 per session

\*\* limit of 18 per session

# Test Descriptions

## **ACCOUNTING I**

High school students taking their first semester of accounting are eligible for this test. Questions will focus on the forms of business ownership, the accounting cycle, transaction analysis, journal entries, adjusting and closing entries, and financial statement preparation. The exam is comprised of multiple-choice questions covering definitions and theory as well as problem solving.

Simple calculators will be allowed but must be provided by the student. In the event of a tie, the first student finished with the test will receive the higher placing. Electronic devices are to be turned off and stored in backpacks, pockets, or purses before the student enters testing area. Any electronic device that is in use or visible will result in student being dismissed from test. Cell phone calculators will not be allowed.

## **AGRI-SCIENCE**

The Agriculture exam will cover all areas of Agriculture Science. Questions on the exam will be from the following areas: Agronomy, Animal Science, Agri-Business, and Mechanized Agriculture.

## **ALGEBRA I**

Students eligible for participation in the Algebra I test are those presently enrolled in first-year algebra in high school or those who have not taken a higher-level course. The test is multiple-choice and contains topics covered in a comprehensive first-year high school algebra course.

Scientific, non-graphing, non-programmable calculators may be used during the test. All calculators must be checked prior to the beginning of the exam. Anyone possessing a programmable graphing calculator will be required to leave it with the proctor until the end of the testing period. Cell phone calculators will not be allowed.

## **ALGEBRA II**

Students eligible for participation in the Algebra II test are those presently enrolled in second-year algebra in high school or those who have taken no higher level course. The test is multiple-choice containing topics covered in a comprehensive second-year high school algebra course.

Scientific, **non-graphing**, non-programmable calculators may be used during the test. All calculators must be checked prior to the beginning of the exam. Anyone possessing a programmable graphing calculator will be required to leave it with the proctor until the end of the testing period. Cell phone calculators will not be allowed.

## **AMERICAN GOVERNMENT**

This will be a comprehensive, objective exam which includes the Constitution, federalism political parties, Congress, Presidency, Federal Courts, and other traditional topics.

## **AMERICAN HISTORY**

This test consists of objective test questions in American History from early beginnings to the present day.

## **ANATOMY AND PHYSIOLOGY**

This exam is an introduction to the form and function of the human body. Questions on organization, basic chemistry, cells, tissues, skin, skeletal system, muscular system, and nervous system will be included.

## **BASIC CONSTRUCTION**

This test will consist of a written portion that includes basic cabinetry, house frame construction, component identification and safety topics along with hands-on tool identification.

*This exam is offered during the 8:30 am and 9:45 am sessions. Students are to sign up for one session only. Exam is limited to one student per school with a maximum of 20 per session. If one session is full, students will be reassigned to the other session after consultation with school representative.*

**BIOLOGY**

This test will cover basic biologic concepts found in commonly-used high school biology texts. It will be open to students who have or are taking high school biology classes.

**CHEMISTRY**

This test includes structure, periodic trends, nomenclature, reactions, concentrations, and acid-base concepts. Calculators will be allowed.

**COMPUTER LITERACY**

Multiple-choice questions will cover information technology topics. Topics such as hardware components, input and output devices, CPU, storage, microcomputers, telecommunications, systems analysis and design, security, privacy, management information systems, and database systems will be included.

**DRAFTING**

The drafting test will consist of multiple-choice questions. The questions relate to fundamentals of drafting and Autodesk software applications. Construction Master Pro or Scientific or Graphing (TI-86 or below or equivalent) calculators may be used during the test. All calculators must be checked prior to the beginning of the exam. Anyone possessing a higher calculator will be required to leave it with the proctor until the end of the testing period. Cell phone calculators will not be allowed.

**ENGLISH COMPOSITION**

The English Composition test is composed of the common elements of Composition I, including MLA formatting, documentation, and Work(s) Cited entries, argumentative structure and paragraph organization, use of apostrophes, sentence coordination, parallelism, pronoun consistency, commonly confused words, sentence fragments, and comma splice/fused sentences.

**FOODS AND NUTRITION**

Students who have been or are enrolled in any home economics courses with reference to foods and nutrition are eligible to take this test. Test topics will include: Food Composition and Nutrition, Food Selection, Preparation Techniques, Management of Preparation, and Meal Services.

**GEOGRAPHY**

This exam will test the students' knowledge in physical, political, economic and cultural geographic themes. Questions will also include a mapping component.

**GEOMETRY**

Those eligible to participate in this exam are high school students now enrolled in a high school geometry course. The test is multiple-choice and contains questions on topics such as lines, angles, triangles, parallel lines, quadrilaterals, circles, similar figures, and loci.

Scientific calculators may be used during the test. Graphing calculators or cell phone calculators will not be allowed.

**INTRODUCTION TO PSYCHOLOGY**

This multiple-choice test covers information relating to Introductory Psychology coursework. Topics include the history of psychology, contemporary perspectives of psychology, learning theories, memory, personality, growth and development, neurology and brain anatomy, consciousness, abnormal behavior, psychological disorders, therapy methods, intelligence, motivation, emotion, sensation, and perception.

**INTRODUCTION TO WELLNESS, SPORTS, AND PHYSICAL EDUCATION**

This multiple-choice test will cover knowledge and information from a sampling of Northeast Community College class offerings. High school freshmen through seniors may participate in this testing competition. Some areas that will be covered are wellness, sports, physical education, recreation, and activities related to classes.

## **LITERATURE**

The Literature test will be a multiple-choice exam covering the following areas: American, English, and World literature, fiction, drama, poetry, and mythology.

## **MEDICAL TERMINOLOGY**

This multiple-choice exam covers all the human body systems, including anatomy, physiology, pathology, diagnostic, and therapeutic procedures. Topics covered on the test include definitions of medical terms and correct spelling of medical terms.

## **PARENTING/CHILD DEVELOPMENT**

The exam will be multiple-choice and consist of questions dealing with good parenting principles and techniques. Areas such as genetics, reproduction, family structures, guidance techniques, moral development, as well as the growth and development of children and parents are included.

## **PERSONAL FINANCE**

Students will be tested over information relating to money management, taxes, investments, personal credit, and insurance. Students may use a calculator and test is limited to one student per school.

## **PHYSICS**

Kinematics, Newton's Laws, energy, momentum, rotational motion, simple harmonic motion, waves and sound, fluids, thermal physics, electrostatics, electricity, magnetism, optics, select modern physics concepts. Calculators will be allowed.

## **PUBLIC SPEAKING**

Students will be tested over elements of public speaking. Topics covered on the test include: informative speaking, listening, research, language, organization, rhetoric, ethics, persuasion, presentational aids, persuasive speaking, credibility, plagiarism, and verbal and nonverbal communication.

## **TECHNICAL MATHEMATICS**

Students eligible for participation in this technical mathematics test are those presently enrolled in a general or applied mathematics course. The test is multiple-choice and contains questions from topics usually covered in general and applied mathematics classes in high school. Some topics include: graphing, Pythagorean Theorem, percent conversions, ratios, proportions, conversions, perimeter, area, volume, right triangle trigonometry, and basic algebra.

Bring a Scientific, non-programmable calculator for use during the test. All calculators must be checked prior to the beginning of the exam. Anyone possessing a programmable calculator will be required to leave it with the proctor until the end of the testing period. Cell phone calculators will not be allowed.

## **TRIGONOMETRY**

Students eligible for participation in the Trigonometry test are those presently enrolled in trigonometry in high school. The test is multiple-choice containing topics covered in a comprehensive high school trigonometry course. ONLY scientific calculators are allowed; No graphing calculator or TI -Nspire will be allowed. Warning: The calculators may be checked by the test proctor. Please remove all unnecessary note cards and programs from your calculator or they may be deleted by the proctor. Failure to comply will result in taking the test without a calculator. Cell phone calculators will not be allowed.

## **VOCABULARY**

The vocabulary test consists of 100 terms used in high school and college vocabulary textbooks. The test includes true/false, multiple-choice, matching, fill in the blank, and sentence writing using prescribed words.

## **WELDING**

Students that are proficient in creating a single pass fillet weld on low carbon steel should register. Contestants will receive a pre-tacked joint and will be assigned to a welding booth. The weldment has been designed to test the student's skill and knowledge of the welding process. The material needed to complete the project will already be on each table, as well as the chipping hammer and brush. Students will be given 5 minutes on a time clock to complete the project. Weldments will be evaluated based on weld size and overall appearance. Speed will also be taken into consideration.

### **Competition Rules:**

- Safety will be followed to the current version of the ANSI Z49.1 Safety in Welding and Allied Processes. UNSAFE PRACTICES WILL GET COMPETITORS DISQUALIFIED.
- Competitors will create a single-pass fillet weld in any position...flat, horizontal, vertical up, or overhead. Competitors will not know what the weldment or position is until they arrive the day of the contest.
- Shielded Metal Arc Welding process will be used.
- E7018 1/8" Electrodes will be used.
- The weld is to be done within a time limit of 5 minutes.
- Material will be low carbon steel, 3/16" to 1/4" plate.
- Electrical parameters will be determined by each competitor.
- Students arriving late for their assigned time will be allowed to weld after all other competitors have completed the exam and only if time still remains in the session.

Safety equipment and proper personal protection equipment is mandatory. Standard items students should bring include: Helmet, welding cap (no ball caps), safety glasses, (must be worn at all times) welding jacket/coat FR, SMAW gloves, normal fitting jeans, 100% cotton work or welding shirt and work boots are required. No tennis shoes and no welding in hoodies. Students without proper safety and personal protection equipment will not be allowed to participate in the contest.

*This exam is offered during the 8:30 am and 9:45 am sessions. Students are to sign up for one session only. Exam is limited to one student per school with a maximum of 18 per session. If one session is full, students will be reassigned to the other session after consultation with school representative.*

## **WORKPLACE COMMUNICATION**

The test will consist of 100 questions covering the proper usage of letters, memos, emails, visuals, and presentations in the workplace. The test also includes questions about correct grammar, sentence analysis, capitalization, plural and possessive nouns, confused words, and punctuation. Questions will be multiple choice.

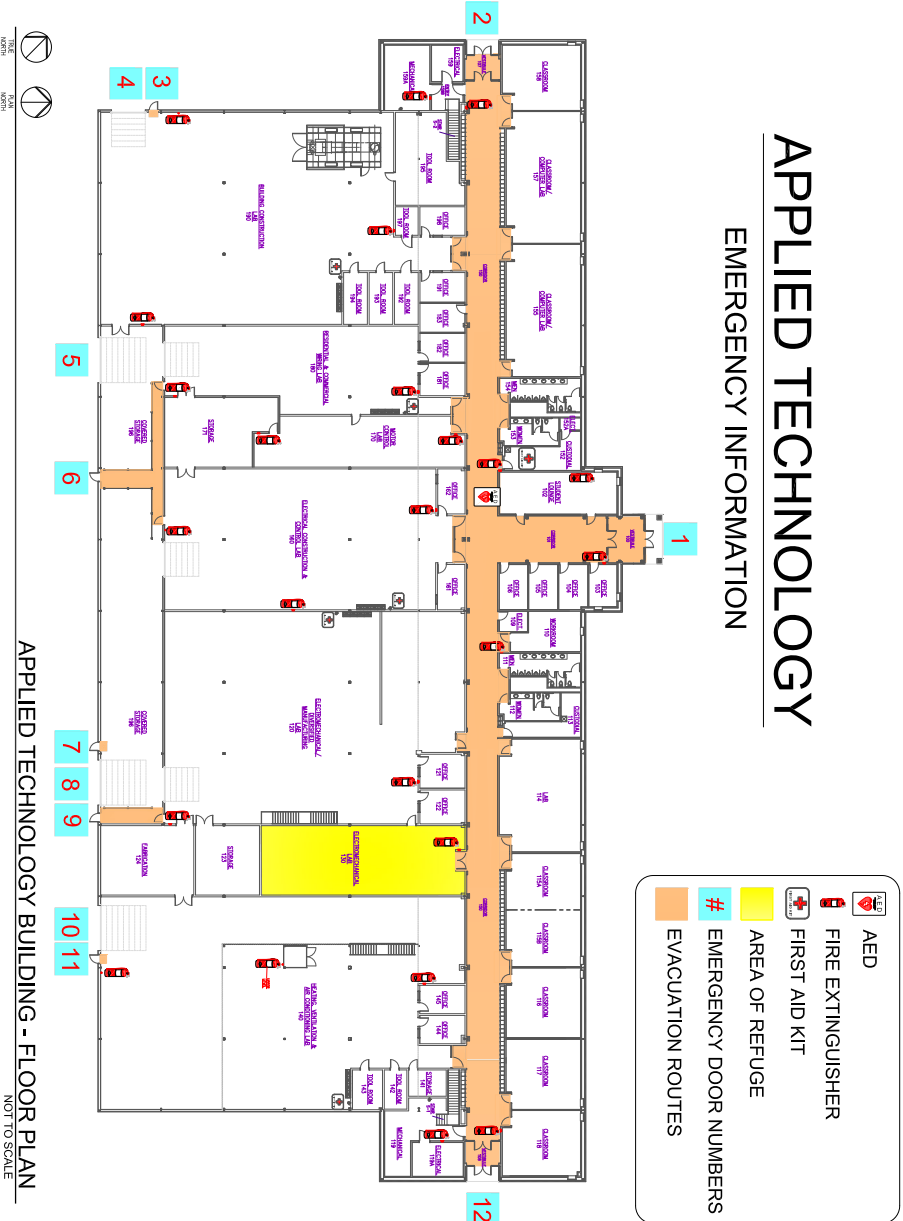
## **WORLD HISTORY**

This will be a multiple-choice question test that covers world history from the first civilizations emerging around 5000 BC until the beginning of the 21st century. The test is composed of questions pertaining to history's great events, philosophies, ideologies, wars, governments, and arts.

# Campus Maps

## APPLIED TECHNOLOGY

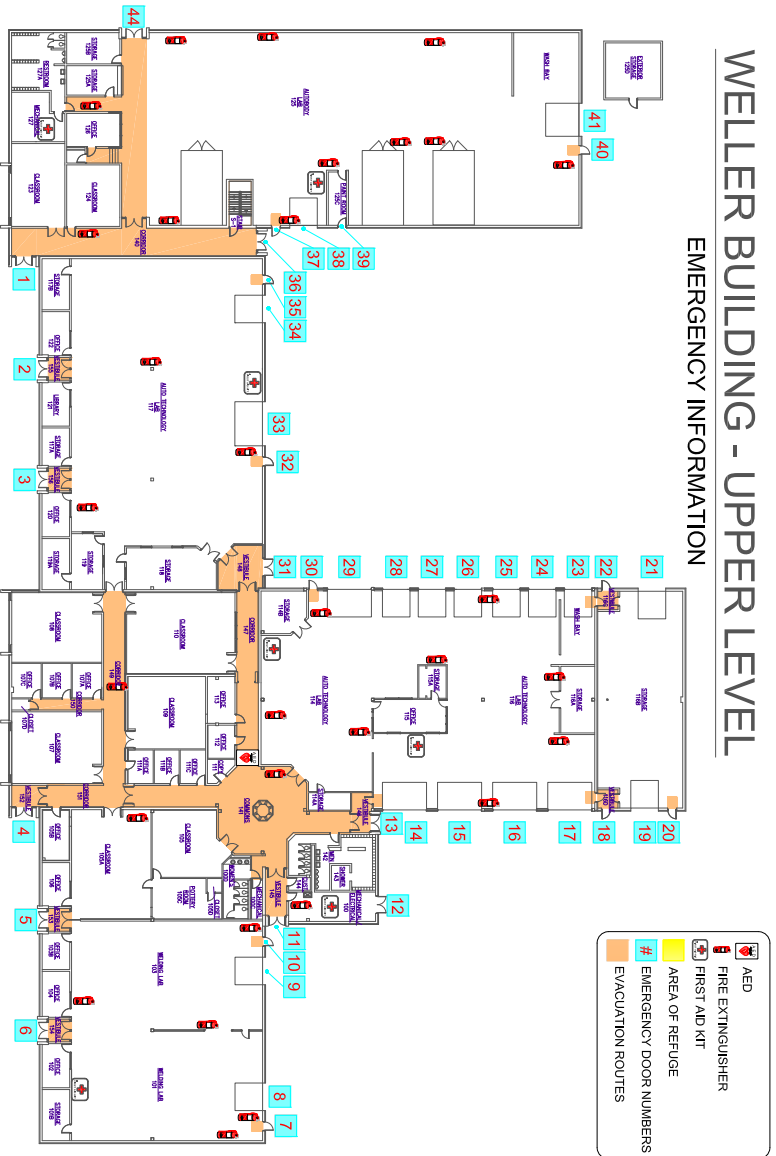
### EMERGENCY INFORMATION



APPLIED TECHNOLOGY BUILDING MAP

# WELLER BUILDING - UPPER LEVEL

## EMERGENCY INFORMATION

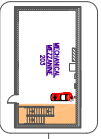


WELLER BUILDING - FLOOR PLAN  
NOT TO SCALE



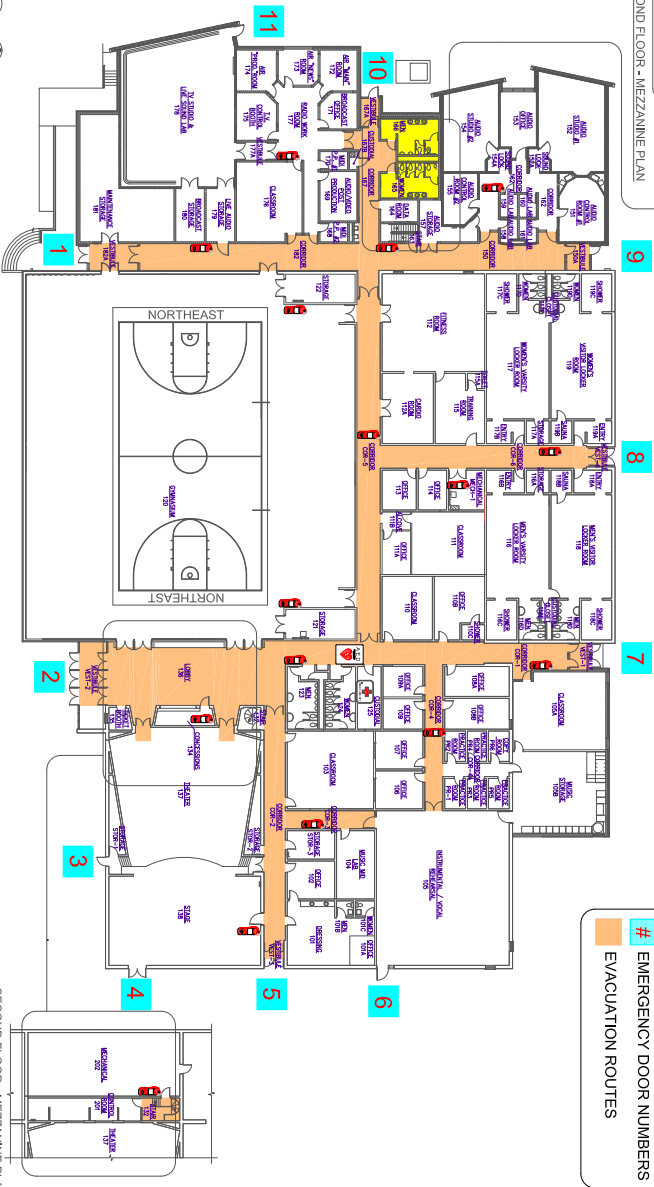
# COX ACTIVITIES CENTER

## EMERGENCY INFORMATION



SECOND FLOOR - MEZZANINE PLAN

	AED
	FIRE EXTINGUISHER
	FIRST AID KIT
	AREA OF REFUGE
	EMERGENCY DOOR NUMBERS
	EVACUATION ROUTES



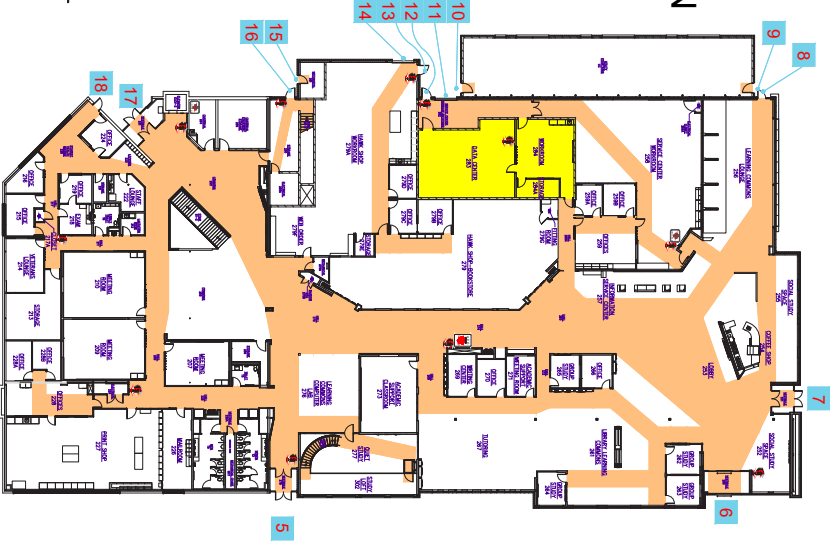
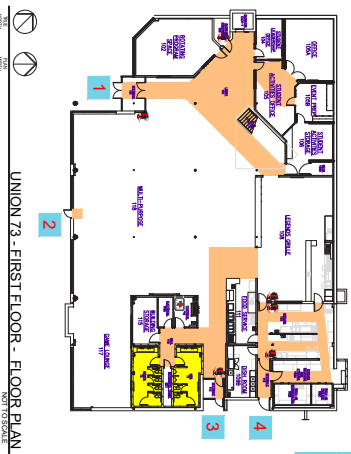
COX ACTIVITIES CENTER - FLOOR PLAN  
NOT TO SCALE

SECOND FLOOR - MEZZANINE PLAN









# UNION 73

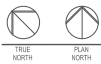
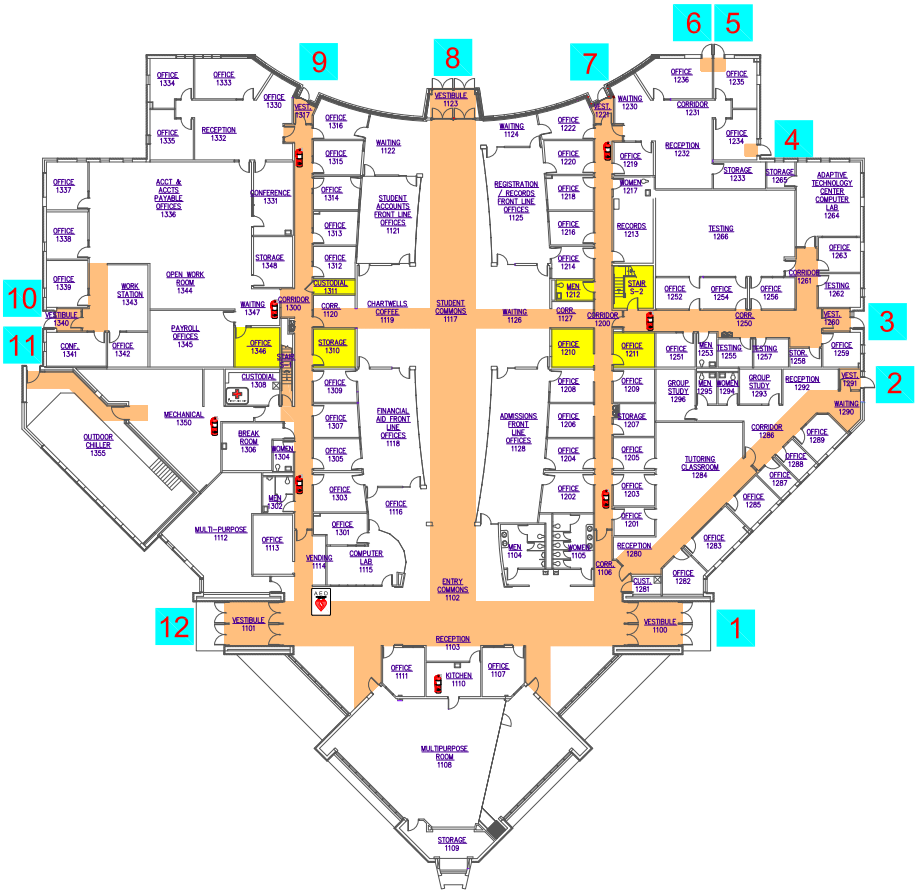
## EMERGENCY INFORMATION



-  AED
-  FIRE EXTINGUISHER
-  FIRST AID KIT
-  AREA OF REFUGE
-  EMERGENCY DOOR NUMBERS
-  EVACUATION ROUTES

# COLLEGE WELCOME CENTER EMERGENCY INFORMATION

-  AED
-  FIRE EXTINGUISHER
-  FIRST AID KIT
-  AREA OF REFUGE
-  # EMERGENCY DOOR NUMBERS
-  EVACUATION ROUTES

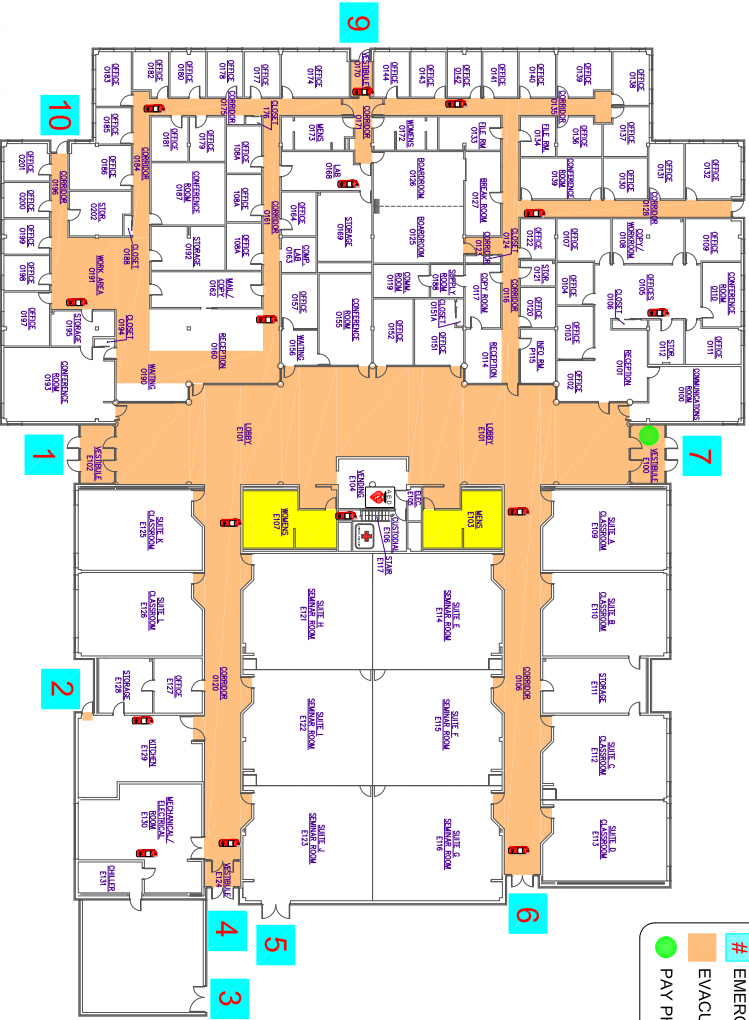


COLLEGE WELCOME CENTER - FLOOR PLAN  
NOT TO SCALE

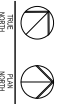
# LIFELONG LEARNING CENTER

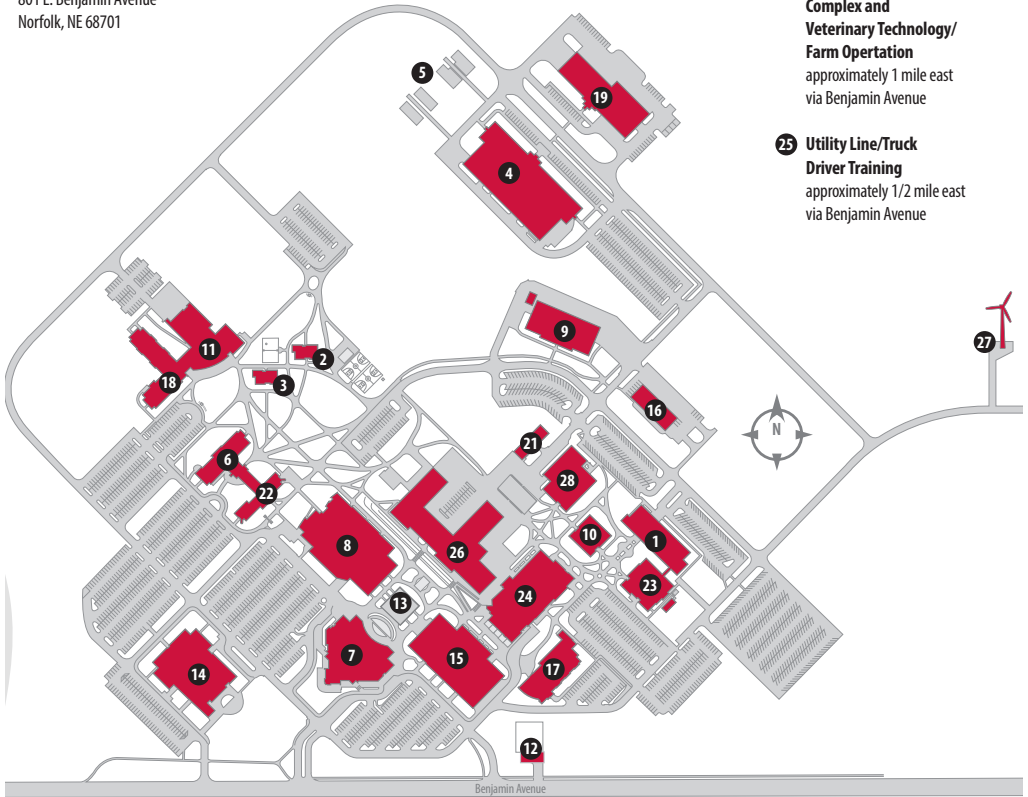
701 East Benjamin Avenue

## EMERGENCY INFORMATION



	AED
	FIRE EXTINGUISHER
	FIRST AID KIT
	AREA OF REFUGE
	EMERGENCY DOOR NUMBERS
	EVACUATION ROUTES
	PAY PHONE





**20 Pohlman Agriculture Complex and Veterinary Technology/ Farm Operation**  
approximately 1 mile east via Benjamin Avenue

**25 Utility Line/Truck Driver Training**  
approximately 1/2 mile east via Benjamin Avenue

- |  |  |  |
|--|--|--|
| 1. Agriculture/Allied Health                 | 11. Hawks Point                        | 21. Surplus Building                   |
| 2. Apartment A                               | 12. Law and Public Safety Training Lab | 22. Simon Hall                         |
| 3. Apartment B                               | 13. Office Space                       | 23. Science                            |
| 4. Applied Technology                        | 14. Lifelong Learning Center           | 24. Union 73                           |
| 5. Building Construction Student Built Homes | 15. Maclay                             | 25. Utility Line/Truck Driver Training |
| 6. Burkhardt Hall                            | 16. Precision/Mechanized Agriculture   | 26. Weller                             |
| 7. College Welcome Center                    | 17. McIntosh College of Nursing        | 27. Wind Turbine                       |
| 8. Cox Activities Center                     | 18. Path Hall                          | 28. Wirth                              |
| 9. Diesel Technology                         | 19. Physical Plant                     |  |
| 10. Echtenkamp                               | 20. Pohlman Agriculture Complex        |  |



NORTHEAST.EDU

# ***YOUR SUCCESS MATTERS***

Northeast is more than just a community college. We're a diverse community of students who have come together to generate innovative ideas, build on each other's experiences, and achieve success. You and your story are an important part of Northeast. **SUCCESS STARTS HERE.**

## **SCHEDULE A VISIT**

At Northeast, we believe some of the most meaningful connections are made one-on-one, and we want everyone to be safe and healthy. You can visit with a Northeast recruiter and/or a Northeast student ambassador virtually online or during an in-person tour at our Norfolk campus. We invite you to learn about the Northeast experience, on-campus living, student life, and our academic programs. Sign-up for a visit today and a recruiter will contact you soon!

**VISIT [NORTHEAST.EDU/CAMPUS-VISIT](https://www.northeast.edu/campus-visit)**

**Northeast**  
community college

Northeast does not discriminate based upon any status protected by law or college policy. Please go to [northeast.edu/nondiscrimination](https://www.northeast.edu/nondiscrimination) for details.

