

A graphic featuring a black shield with a red border. At the top of the shield is a red circle containing a black trophy cup flanked by black laurel branches. The words "SCHOLASTIC" and "CONTEST" are written in white, bold, sans-serif capital letters, stacked vertically in the center of the shield. A grey banner with a black border and pointed ends is positioned across the lower part of the shield, containing the word "SUCCESS" in black, bold, sans-serif capital letters. The background of the shield is black with faint, diagonal grey lines.

SCHOLASTIC CONTEST

SUCCESS

MARCH 22, 2023

Northeast
community college

Scholastic Contest Previous Winners

2022

Class C Pierce High School

Class D (Tie) Bloomfield High School &
St. Mary's High School - O'Neill

2021

Class C Pierce High School

Class D St. Mary's High School - O'Neill

2019

Class C Wayne Community Schools

Class D Wausa Public School

2018

Class C O'Neill Public Schools

Class D Bancroft-Rosalie Schools

2017

Class C Wayne Community Schools

Class D St. Mary's High School - O'Neill

2016

Class C Wisner-Pilger High School

Class D St. Mary's High School - O'Neill

2015

Class C Pierce High School

Class D St. Mary's High School - O'Neill

2014

Class C Wisner-Pilger High School

Class D Lindsay Holy Family School

2013

Class C Wayne Community Schools

Class D St. Mary's High School - O'Neill

2012

Class C Wisner-Pilger High School

Class D West Boyd Schools

2011

Class C O'Neill Public Schools

Class D West Point Central Catholic

2010

Class C Norfolk Catholic High School

Class D Orchard High School

Table of Contents

Entry2

Eligibility.....2

Event Cancellation.....2

Competition Rules.....3

Scholarships/Tuition Waivers.....3

Check-In3

Campus Info4

Entertainment4

On-Campus Dining4

Presentation of Awards4

Test Time Schedule.....5

Test Descriptions 6-9

Campus Building Maps.....10-14

ENTRY

Scholastic Contest entries must be received by the Northeast Community College Educational Services Office on or before February 27, 2023. All entries must be submitted electronically via email on the official entry form template and are considered final. In the case of emergencies, please contact Doris Holmquist at doris@northeast.edu. *No late registrations or student substitutions will be allowed after the February 27 deadline.*

ELIGIBILITY

Contestants shall be a bona fide high school student, grades 9 through 12, doing at least passing work during the previous semester enrolled. Students should not be registered for a test when they are enrolled in or have taken the next higher level academic course. If students have previously taken a specific subject exam, they are ineligible to repeat the exam at a later date.

EVENT CANCELLATION

If weather conditions are severe, it may result in cancellation of the Scholastic Contest event. Weather-related announcements will be broadcast via the Northeast Community College website (northeast.edu), the college automated phone system (1-800-348-9033), and all area radio and TV stations. The decision to cancel will be made by 5:00 a.m., or shortly thereafter, on the morning of the event. If Northeast Community College is closed, all student events are also cancelled. High school officials should use their discretion to determine if weather and road conditions in their immediate area make travel hazardous for their students.

COMPETITION RULES

1. Testing periods will be 60 minutes in length. Exams will be given only at the time scheduled. Only the Basic Construction and Welding exams will be given during two testing sessions due to limited capacity in facilities.
2. The number of contestants from any one school in any test will be limited to ONE. No individual student may be registered for more than one test during the same time period. Each individual student may be registered for no more than TWO separate tests.
3. Students will not be allowed to use cell phones or other external devices, other than permitted calculators specifically noted in test descriptions while testing. Violators will be disqualified from the exam.
4. Student testing accommodations must be requested in writing by a high school official 10 working days prior to the event. Requests should be sent to Doris Holmquist, doris@northeast.edu.
5. All tests/questions remain the property of Northeast Community College and are routinely reviewed and updated by College faculty. Tie breaker questions will be used when required to determine placing. All decisions are final.
6. Northeast Community College does not discriminate on the basis of sex, handicap, race, color, age, religion, marital status, veteran's status, or national or ethnic origin in educational programs, admissions policies, employment policies, financial aid, or other college-administered programs.
7. Inquiries concerning the Scholastic Contest or a specific exam should be addressed to Doris Holmquist, doris@northeast.edu.

SCHOLARSHIPS/TUITION WAIVERS

The Northeast Community College Foundation has authorized two \$1,000.00 scholarships for the 2023-2024 academic year to be awarded as part of the Scholastic Contest competition. The \$1,000.00 scholarship will be awarded to the school whose team places first in each class of competition: Class C and Class D.

The scholarship recipient must be a student who:

1. Participated in the 2023 Northeast Community College High School Scholastic Contest.
2. Will graduate from high school in 2023.
3. Registers as a full-time student at Northeast for the 2023-2024 academic year.

In addition to the \$1,000.00 scholarship granted to the winning schools in Class C and Class D, Northeast will be awarding tuition waivers valued at \$1,000.00 each (one-half awarded in the fall and spring terms) to seniors who earn first place in their exam. The tuition waivers will be awarded to the 12 seniors in each class with the highest percentage grade on the test that earned the student first place. The College will determine any tie-breaker situations.

School officials are asked to contact the Financial Aid Office at Northeast Community College and provide them with the scholarship/tuition waiver recipient's name, when determined.

CHECK-IN

Check-in for the Scholastic Contest will be held in the lobby of the Cox Activities Center between 7:45-8:15 a.m. School faculty or sponsors must pick up their registration packets during this time.

HOSPITALITY AREA

School counselors and sponsors are invited to gather for coffee and conversation in Union 73 (second floor lounge) beginning at 8:30 a.m. Northeast staff will be available to answer questions on college programs and processes.

CAMPUS INFORMATION

Information and brochures on college programs of study will be available, along with guidelines to help coordinate future campus visits.

ENTERTAINMENT

Entertainment and activities for students such as a scavenger hunt, karaoke, or a movie, are being planned throughout the day in the Cox Activities Center.

ON-CAMPUS DINING

CONCESSIONS

A concession stand in the lobby of the Cox Activities Center will offer donuts, pizza, nachos, pop, candy and other snack items. Hours are 7:30 a.m.-1:30 p.m.

HAWKS POINT DINING HALL

Cafeteria style breakfast and lunch is available in the dining hall to students. Breakfast is served from 6:30am-10:00am and lunch from 11:00am-2:00pm. At the Door Ticket purchase is \$8.56 for either meal. Schools can pre-purchase student meal tickets by contacting Jeff Fisher Jeff.Fisher@compass-usa.com or calling 402-844-7165.

WE PROUDLY SERVE STARBUCKS

A coffee kiosk located in Union 73 (second floor) offers a menu of Starbucks brewed coffee, espresso beverages, and Frappuccinos. Bakery and snack items are available. Hours are 8:00am-3:00pm.

PRESENTATION OF AWARDS

Awards will be presented beginning at 1:45 p.m in the Cox Activities Center gymnasium. Individual student names will be recognized for first, second, and third place in each test, in each class of the Scholastic Contest competition and medals will be awarded. (If only one school enters a class, only one medal will be awarded.) High School Team plaques will also be awarded to the top three high schools receiving the most points in Class C and in Class D. Scoring is based on the following system:

First Place, 3 points | Second Place, 2 points | Third Place, 1 point

In addition, certificates of participation will be given to all registered contestants. Following the Scholastic Contest, certificates, medals, plaques, and a summary report of the respective school's students will be forwarded to the school official identified in previous correspondence.



Test Time Schedule

8:30 a.m. - 9:30 a.m.

Test Session 1

Subject

Agri-Science
Algebra II
Basic Construction*
Chemistry
Medical Terminology
Parenting & Child
Development
Public Speaking
Trigonometry
Vocabulary
Welding**

9:45 a.m. - 10:45 a.m.

Test Session 2

Subject

Accounting I
Algebra I
American Government
Basic Construction*
Foods & Nutrition
Geometry
Introduction to Psychology
Literature
Technical Mathematics
Welding**
World History

11:00 a.m. - 12:00 p.m.

Test Session 3

Subject

American History
Biology
Computer Literacy
Drafting
English Composition
Geography
Personal Finance
Physics
Workplace Communication

* limit of 20 per session

** limit of 18 per session

Test Descriptions

ACCOUNTING I

High school students taking their first semester of accounting are eligible for this test. Questions will focus on the forms of business ownership, the accounting cycle, transaction analysis, journal entries, adjusting and closing entries, and financial statement preparation. The exam is comprised of multiple-choice questions covering definitions and theory as well as problem solving.

Simple calculators will be allowed but must be provided by the student. In the event of a tie, the first student finished with the test will receive the higher placing. Electronic devices are to be turned off and stored in backpacks, pockets, or purses before the student enters testing area. Any electronic device that is in use or visible will result in student being dismissed from test. Cell phone calculators will not be allowed.

AGRI-SCIENCE

The Agriculture exam will cover all areas of Agriculture Science. Questions on the exam will be from the following areas: Agronomy, Animal Science, Agri-Business, and Mechanized Agriculture.

ALGEBRA I

Students eligible for participation in the Algebra I test are those presently enrolled in first-year algebra in high school or those who have not taken a higher-level course. The test is multiple-choice and contains topics covered in a comprehensive first-year high school algebra course.

Scientific, non-graphing, non-programmable calculators may be used during the test. All calculators must be checked prior to the beginning of the exam. Anyone possessing a programmable graphing calculator will be required to leave it with the proctor until the end of the testing period. Cell phone calculators will not be allowed.

ALGEBRA II

Students eligible for participation in the Algebra II test are those presently enrolled in second-year algebra in high school or those who have taken no higher level course. The test is multiple-choice containing topics covered in a comprehensive second-year high school algebra course.

Scientific, **non-graphing**, non-programmable calculators may be used during the test. All calculators must be checked prior to the beginning of the exam. Anyone possessing a programmable graphing calculator will be required to leave it with the proctor until the end of the testing period. Cell phone calculators will not be allowed.

AMERICAN GOVERNMENT

This will be a comprehensive, objective exam which includes the Constitution, federalism political parties, Congress, Presidency, Federal Courts, and other traditional topics.

AMERICAN HISTORY

This test consists of objective test questions in American History from early beginnings to the present day.

ANATOMY AND PHYSIOLOGY

This exam is an introduction to the form and function of the human body. Questions on organization, basic chemistry, cells, tissues, skin, skeletal system, muscular system, and nervous system will be included.

BASIC CONSTRUCTION

This test will consist of a written portion that includes basic cabinetry, house frame construction, component identification and safety topics along with hands-on tool identification.

This exam is offered during the 8:30 am and 9:45 am sessions. Students are to sign up for one session only. Exam is limited to one student per school with a maximum of 20 per session. If one session is full, students will be reassigned to the other session after consultation with school representative.

BIOLOGY

This test will cover basic biologic concepts found in commonly-used high school biology texts. It will be open to students who have or are taking high school biology classes.

CHEMISTRY

This test includes structure, periodic trends, nomenclature, reactions, concentrations, and acid-base concepts. Calculators will be allowed.

COMPUTER LITERACY

Multiple-choice questions will cover information technology topics. Topics such as hardware components, input and output devices, CPU, storage, microcomputers, telecommunications, systems analysis and design, security, privacy, management information systems, and database systems will be included.

DRAFTING

The drafting test will consist of multiple-choice questions. The questions relate to fundamentals of drafting and Autodesk software applications. Construction Master Pro or Scientific or Graphing (TI-86 or below or equivalent) calculators may be used during the test. All calculators must be checked prior to the beginning of the exam. Anyone possessing a higher calculator will be required to leave it with the proctor until the end of the testing period. Cell phone calculators will not be allowed.

ENGLISH COMPOSITION

The English Composition test is composed of the common elements of Composition I, including MLA formatting, documentation, and Work(s) Cited entries, argumentative structure and paragraph organization, use of apostrophes, sentence coordination, parallelism, pronoun consistency, commonly confused words, sentence fragments, and comma splice/fused sentences.

FOODS AND NUTRITION

Students who have been or are enrolled in any home economics courses with reference to foods and nutrition are eligible to take this test. Test topics will include: Food Composition and Nutrition, Food Selection, Preparation Techniques, Management of Preparation, and Meal Services.

GEOGRAPHY

This exam will test the students' knowledge in physical, political, economic and cultural geographic themes. Questions will also include a mapping component.

GEOMETRY

Those eligible to participate in this exam are high school students now enrolled in a high school geometry course. The test is multiple-choice and contains questions on topics such as lines, angles, triangles, parallel lines, quadrilaterals, circles, similar figures, and loci.

Scientific calculators may be used during the test. Graphing calculators or cell phone calculators will not be allowed.

INTRODUCTION TO PSYCHOLOGY

This test covers introductory information relating to the field of psychology, to include topics such as the history of psychology, contemporary perspectives of psychology, learning theory, memory, personality, growth and development, neurology, consciousness, abnormal behavior, therapies, intelligence, motivation, emotion, sensation, and perception.

INTRODUCTION TO WELLNESS, SPORTS, AND PHYSICAL EDUCATION

This multiple-choice test will cover knowledge and information from a sampling of Northeast Community College class offerings. High school freshmen through seniors may participate in this testing competition. Some areas that will be covered are wellness, sports, physical education, recreation, and activities related to classes.

LITERATURE

The Literature test will be a multiple-choice exam covering the following areas: American, English, and World literature, fiction, drama, poetry, and mythology.

MEDICAL TERMINOLOGY

This test covers a typical high school course in Medical Terminology. Topics covered on the test include definitions of medical terms and correct spelling of medical terms.

PARENTING/CHILD DEVELOPMENT

The exam will be multiple-choice and consist of questions dealing with good parenting principles and techniques. Areas such as genetics, reproduction, family structures, guidance techniques, moral development, as well as the growth and development of children and parents are included.

PERSONAL FINANCE

Students will be tested over information relating to money management, taxes, investments, personal credit, and insurance. Students may use a calculator and test is limited to one student per school.

PHYSICS

Kinematics, Newton's Laws, energy, momentum, rotational motion, simple harmonic motion, waves and sound, fluids, thermal physics, electrostatics, electricity, magnetism, optics, select modern physics concepts. Calculators will be allowed.

PUBLIC SPEAKING

Students will be tested over elements of public speaking. Topics covered on the test include: informative speaking, listening, research, language, organization, rhetoric, ethics, persuasion, presentational aids, persuasive speaking, credibility, plagiarism, and verbal and nonverbal communication.

TECHNICAL MATHEMATICS

Students eligible for participation in this technical mathematics test are those presently enrolled in a general or applied mathematics course. The test is multiple-choice and contains questions from topics usually covered in general and applied mathematics classes in high school. Some topics include: graphing, Pythagorean Theorem, percent conversions, ratios, proportions, conversions, perimeter, area, volume, right triangle trigonometry, and basic algebra.

Bring a Scientific, non-programmable calculator for use during the test. All calculators must be checked prior to the beginning of the exam. Anyone possessing a programmable calculator will be required to leave it with the proctor until the end of the testing period. Cell phone calculators will not be allowed.

TRIGONOMETRY

Students eligible for participation in the Trigonometry test are those presently enrolled in trigonometry in high school. The test is multiple-choice containing topics covered in a comprehensive high school trigonometry course. ONLY scientific calculators are allowed; No graphing calculator or TI -Nspire will be allowed. Warning: The calculators may be checked by the test proctor. Please remove all unnecessary note cards and programs from your calculator or they may be deleted by the proctor. Failure to comply will result in taking the test without a calculator. Cell phone calculators will not be allowed.

VOCABULARY

The vocabulary test consists of 100 terms used in high school and college vocabulary textbooks. The test includes true/false, multiple-choice, matching, fill in the blank, and sentence writing using prescribed words.

WELDING

Students that are proficient in creating a single pass fillet weld on low carbon steel should register. Contestants will receive a pre-tacked joint and will be assigned to a welding booth. The weldment has been designed to test the student's skill and knowledge of the welding process. The material needed to complete the project will already be on each table, as well as the chipping hammer and brush. Students will be given 5 minutes on a time clock to complete the project. Weldments will be evaluated based on weld size and overall appearance. Speed will also be taken into consideration.

Competition Rules:

- Safety will be followed to the current version of the ANSI Z49.1 Safety in Welding and Allied Processes. UNSAFE PRACTICES WILL GET COMPETITORS DISQUALIFIED.
- Competitors will create a single-pass fillet weld in any position...flat, horizontal, vertical up, or overhead. Competitors will not know what the weldment or position is until they arrive the day of the contest.
- Shielded Metal Arc Welding process will be used.
- E7018 1/8" Electrodes will be used.
- The weld is to be done within a time limit of 5 minutes.
- Material will be low carbon steel, 3/16" to 1/4" plate.
- Electrical parameters will be determined by each competitor.
- Students arriving late for their assigned time will be allowed to weld after all other competitors have completed the exam and only if time still remains in the session.

Safety equipment and proper personal protection equipment is mandatory. Standard items students should bring include: Helmet, welding cap (no ball caps), safety glasses, (must be worn at all times) welding jacket/coat FR, SMAW gloves, normal fitting jeans, 100% cotton work or welding shirt and work boots are required. No tennis shoes and no welding in hoodies. Students without proper safety and personal protection equipment will not be allowed to participate in the contest.

This exam is offered during the 8:30 am and 9:45 am sessions. Students are to sign up for one session only. Exam is limited to one student per school with a maximum of 18 per session. If one session is full, students will be reassigned to the other session after consultation with school representative.

WORKPLACE COMMUNICATION

The test will consist of 100 questions covering the proper usage of letters, memos, emails, visuals, and presentations in the workplace. The test also includes questions about correct grammar, sentence analysis, capitalization, plural and possessive nouns, confused words, and punctuation. Questions will be multiple choice.

WORLD HISTORY

This will be a multiple-choice question test that covers world history from the first civilizations emerging around 5000 BC until the beginning of the 21st century. The test is composed of questions pertaining to history's great events, philosophies, ideologies, wars, governments, and arts.

APPLIED TECHNOLOGY

EMERGENCY INFORMATION



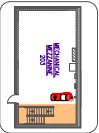
EMERGENCY INFORMATION



WELLER BUILDING - FLOOR PLAN

COX ACTIVITIES CENTER

EMERGENCY INFORMATION



SECOND FLOOR - MEZZANINE PLAN

AED

FIRE EXTINGUISHER

FIRST AID KIT

AREA OF REFUGE

EMERGENCY DOOR NUMBERS

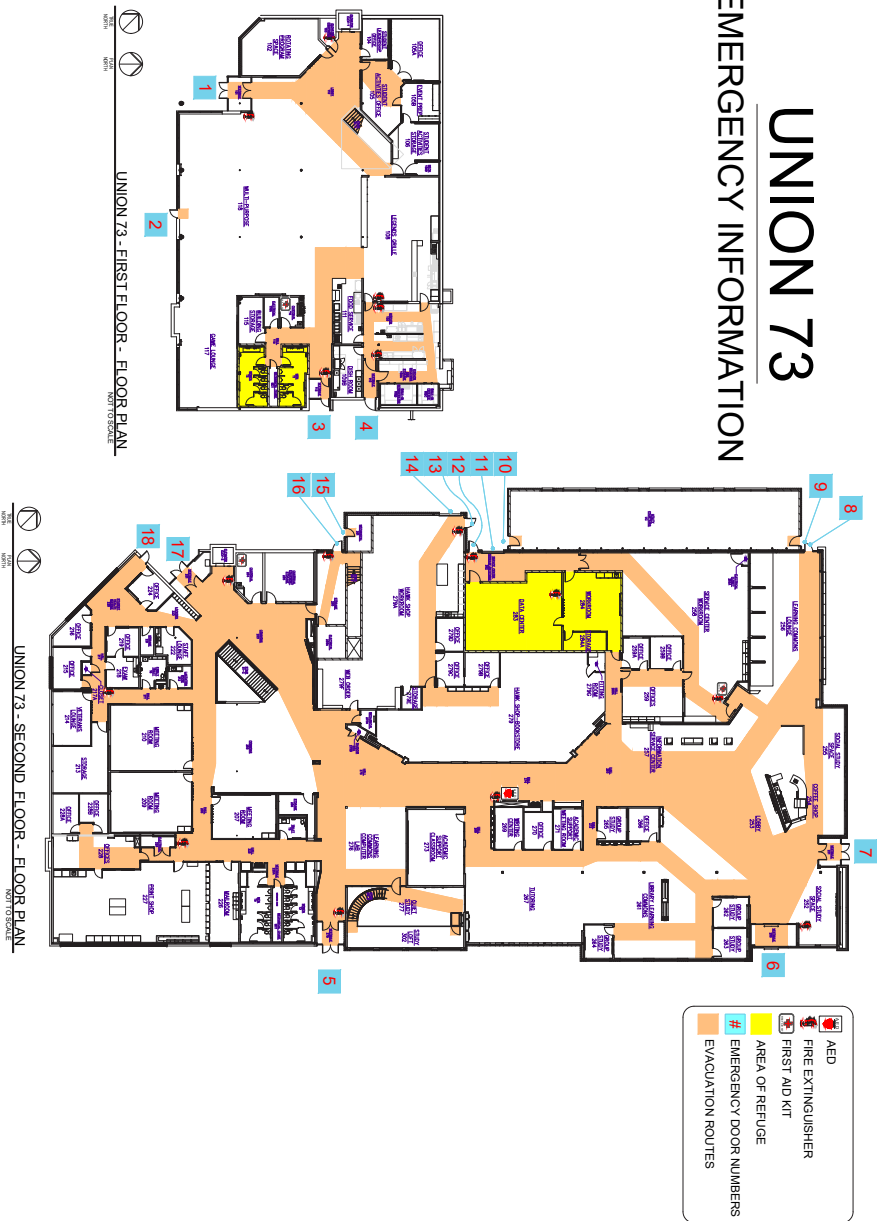
EVACUATION ROUTES



COX ACTIVITIES CENTER - FLOOR PLAN
NOT TO SCALE







SECOND FLOOR - MEZZANINE PLAN

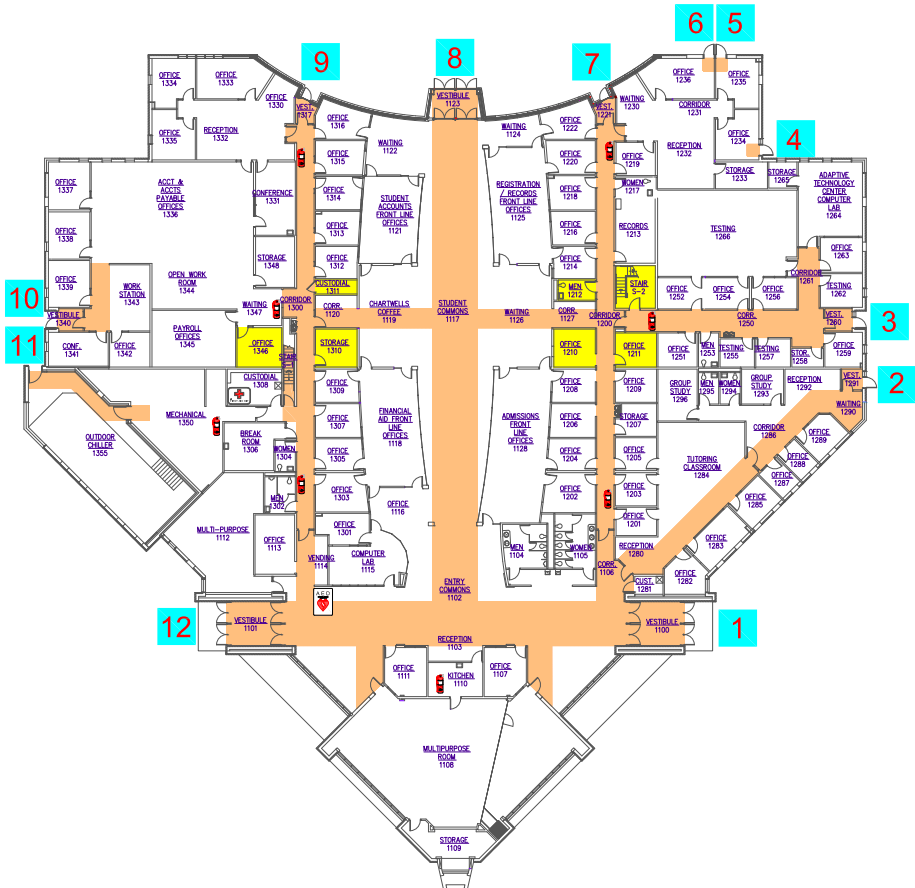
UNION 73 EMERGENCY INFORMATION



COLLEGE WELCOME CENTER

EMERGENCY INFORMATION

-  AED
-  FIRE EXTINGUISHER
-  FIRST AID KIT
-  AREA OF REFUGE
-  # EMERGENCY DOOR NUMBERS
-  EVACUATION ROUTES

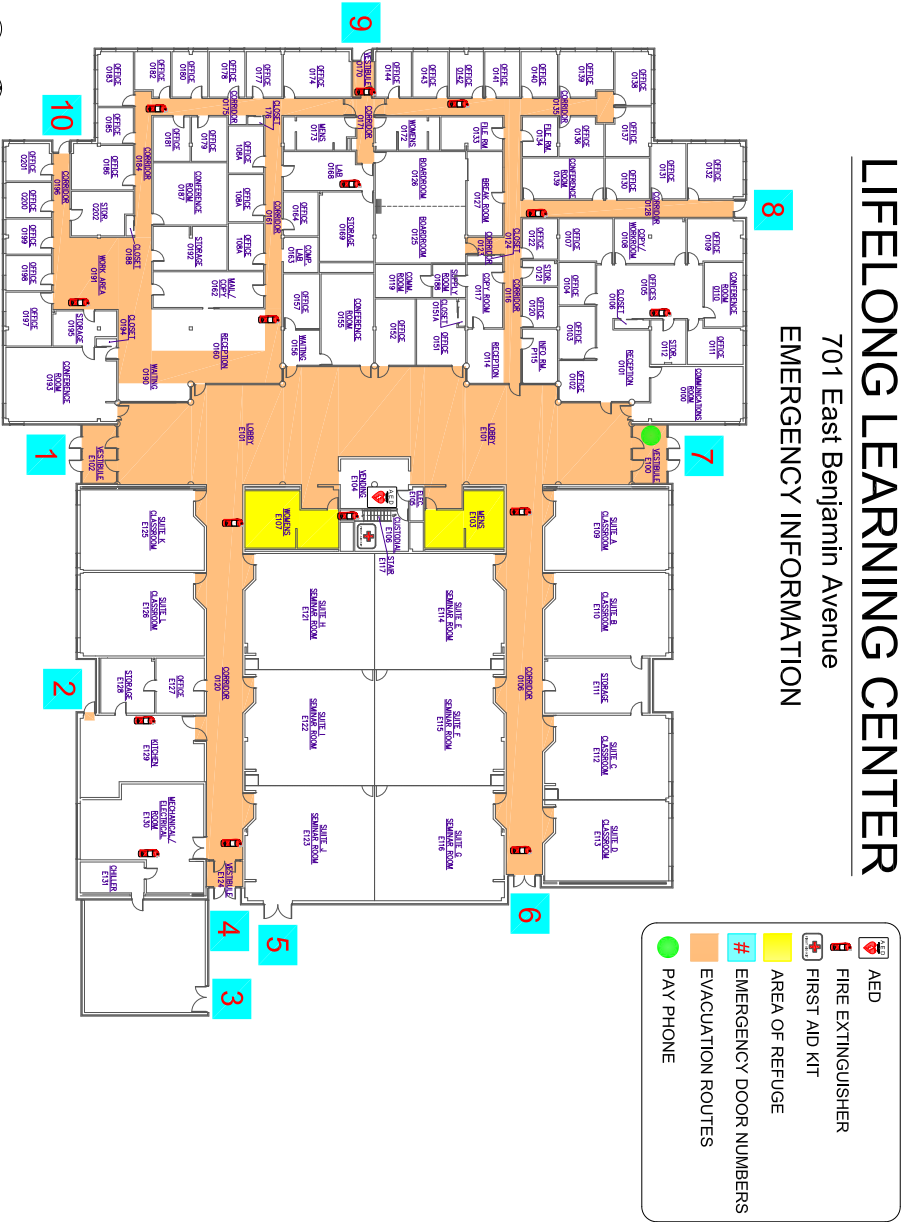


COLLEGE WELCOME CENTER - FLOOR PLAN
NOT TO SCALE

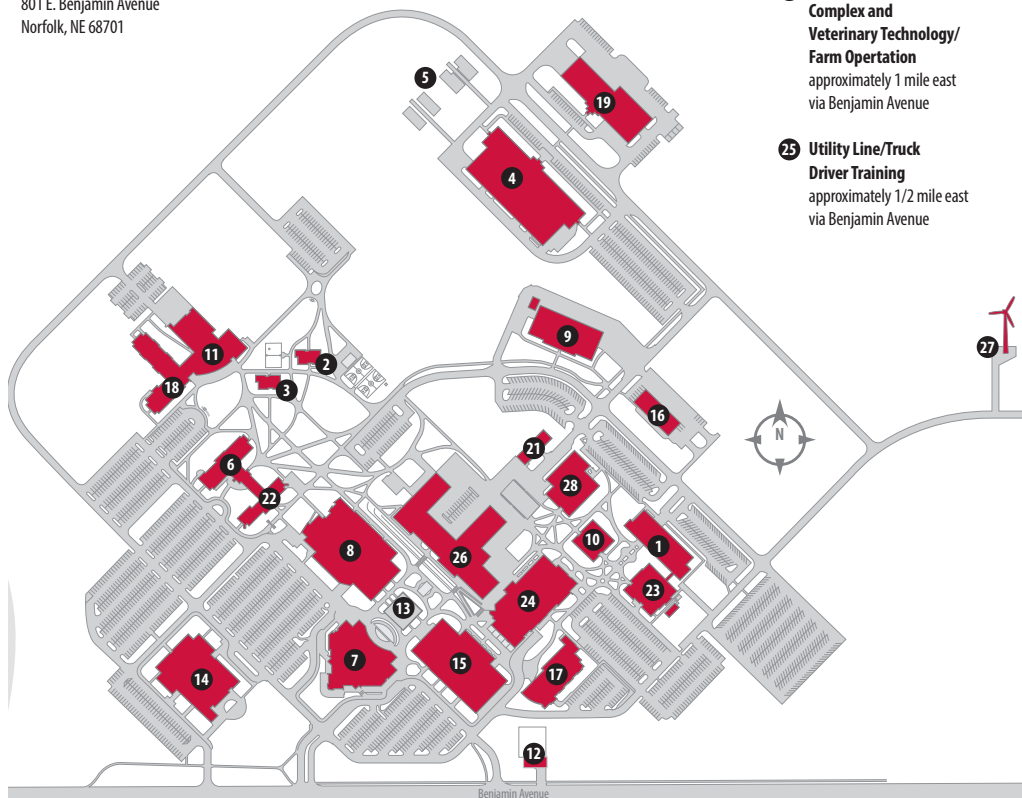
LIFELONG LEARNING CENTER

701 East Benjamin Avenue

EMERGENCY INFORMATION



LIFELONG LEARNING CENTER BUILDING MAP



20 Pohlman Agriculture Complex and Veterinary Technology/ Farm Opertation
approximately 1 mile east via Benjamin Avenue

25 Utility Line/Truck Driver Training
approximately 1/2 mile east via Benjamin Avenue

1. Agriculture/Allied Health

2. Apartment A

3. Apartment B

4. Applied Technology

5. Building Construction Student Built Homes

6. Burkhardt Hall

7. College Welcome Center

8. Cox Activities Center

9. Diesel Technology

10. Echtenkamp

11. Hawks Point

12. Law and Public Safety Training Lab

13. Office Space

14. Lifelong Learning Center

15. Maclay

16. Precision/Mechanized Agriculture

17. McIntosh College of Nursing

18. Path Hall

19. Physical Plant

20. Pohlman Agriculture Complex

21. Surplus Building

22. Simon Hall

23. Science

24. Union 73

25. Utility Line/Truck Driver Training

26. Weller

27. Wind Turbine

28. Wirth



NORTHEAST.EDU

YOUR SUCCESS MATTERS

Northeast is more than just a community college. We're a diverse community of students who have come together to generate innovative ideas, build on each other's experiences, and achieve success. You and your story are an important part of Northeast. **SUCCESS STARTS HERE.**

SCHEDULE A VISIT

At Northeast, we believe some of the most meaningful connections are made one-on-one, and we want everyone to be safe and healthy. You can visit with a Northeast recruiter and/or a Northeast student ambassador virtually online or during an in-person tour at our Norfolk campus. We invite you to learn about the Northeast experience, on-campus living, student life, and our academic programs. Sign-up for a visit today and a recruiter will contact you soon!

VISIT [NORTHEAST.EDU/CAMPUS-VISIT](https://northeast.edu/campus-visit)

Northeast
community college

Northeast does not discriminate based upon any status protected by law or college policy. Please go to northeast.edu/nondiscrimination for details.

